

# CENTRAL INTERCEPTOR BULLETIN

Rawalpindi Reserve site, 9a Rawalpindi Street

**We're building the Central Interceptor, a super-sized wastewater tunnel to reduce overflows, creating a better environment for you to enjoy.**

## Site update

We've been hard at work and have constructed several chambers and sewer connections at the site since our last update. The 30m-deep shaft has been fully-lined which includes pre-cast (glass-reinforced plastic) cascade shelves. The main sewer link tunnel connecting the Rawalpindi and Norgrove sites has now been completed.

The team has constructed three manholes and a large overflow chamber in the area closest to the stream. We have built another two manholes and associated pipes on a neighbouring private property. All these manholes and the chamber will be connected to the control chamber before flowing into the shaft and then to the tunnel below. These manholes and chamber varied from 7m deep to 5m wide. We also laid more than 90m of piping of differing widths to connect all the manholes and chambers.

## Upcoming work

We are now focussing on building the control chamber next to the shaft. This chamber is being constructed around the operational Ōrākei Main Sewer (OMS) and is 9m deep and 4.5m wide, with a 6m-long section inside our work area.

A big challenge has been excavating around operational and ageing pipes. We can only work on operational pipes during low sewer flows late at night and very early in the morning. Cutting into the 100-year-old OMS was managed in record time, taking one night shift instead of the anticipated 18.

This chamber has been carefully excavated and will now be fully lined with concrete before a lid is placed on it. The control chamber is designed to regulate the flow of wastewater. It does so by adjusting the flow rates of the wastewater into the shaft using automated hydraulic gates.

We will shortly begin building a new plant room. Approximately 6m high and 10.5m long, it will contain all the hydraulic and mechanical equipment to operate the automated gates in the chamber. Several metres of air duct and power cables will connect the plantroom and the control chamber.

All the various new manholes, chambers and pipes will all be connected and tested together with the machinery in the plant



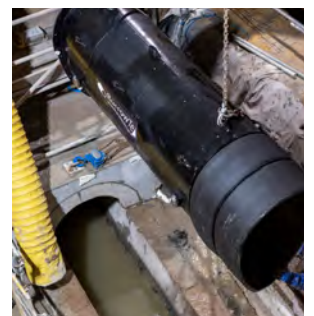
GRP roof construction



GRP lid being moved into place

room before we end our construction work on site. Following the successful connections and testing, we will be able to reinstate the site.

With possible changes to the plant room location and delays due to the very hard ground conditions, reinstatement is currently planned for January 2026. We will first plant grass, followed by replacement trees and shrubs during the appropriate planting season in May.



Installing a steel flume into the cutout section of OMS

## TELL US HOW YOU REALLY FEEL

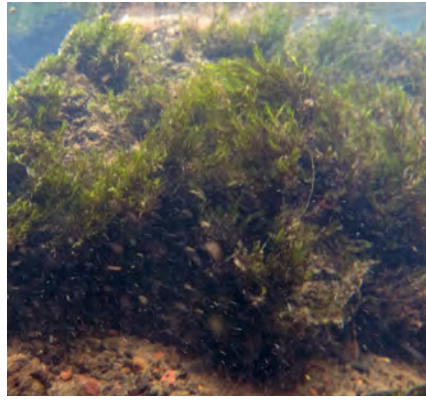
Take the online survey at: [www.watercare.co.nz/aucklandprojects](http://www.watercare.co.nz/aucklandprojects) or scan the QR code



## Rare find thriving

In March last year we spent a day in Meola Stream, next to the site, carefully relocating a very rare moss. We moved the rocks that had the moss attached to them upstream away from our construction activity to enable it to thrive. Partnering with Ecology NZ we formed a modern 'chain gang' and manually relocated the moss upstream.

Partnering with Ecology NZ we also sent a few pieces of cobble covered in moss to the Auckland Botanic Gardens to try and seed a new population of moss. Until now the fern-like underwater moss, *Fissidens berteroi*, is known to exist in only three other places in New Zealand. This vulnerable and threatened aquatic moss was discovered by our environmental team in this new location. *F. berteroi* is an essential part of the eco-system, providing shelter, food source and filtration to an array of aquatic species.



*F. berteroi* in Meola Creek



GAJV Social Outcomes Manager, Sandra Edwards, is pleased with the new find

## Tunnel progress

Check out our website which now has a weekly update of the TBM's progress. <https://www.watercare.co.nz/Central-interceptor/Constructing-the-Central-Interceptor>.

You can also follow us on Facebook, or Instagram.



## Southern section of our tunnel is 'switched on'

Our CI project has passed an historic milestone with the southern half of the tunnel going live. This section, Blockhouse Bay east to May Road (Link Sewer C), then south to Māngere Wastewater Treatment Plant, is 10.8km long. We are now one step closer to the goal of cleaner inland waterways and open spaces for central Auckland.

We held a formal celebration event on 14 February in our new pump station at the treatment plant, attended by Minister for Local Government Simon Watts, Auckland Mayor Wayne Brown, local elected members and project teams. Around 200 guests lined the pump station shaft as Mayor Brown gave an order to start up the new giant pumps. These send wastewater flows from the tunnel to the treatment plant at a rate of 1,200 litres per second.

It was an historic moment as we recognised the accomplishments of the 600-strong Watercare and Ghella Abergeldie JV project teams which began construction in 2019.

Mayor Brown said that as an engineer himself, he appreciated the skills involved to achieve this outcome: "It's a significant milestone for Aucklanders and a huge engineering feat for the team who have been working for the past six years. I look forward to the Central Interceptor project being completed next year to fully realise the benefit, including a significant reduction in wet weather overflows and improved water quality."

We are hugely proud of the tenacity and dedication of our team in particular our construction partners Ghella Abergeldie JV. We didn't want to wait until the project was finished at the end of 2026 before getting the southern tunnel going. We've done that despite everything that's been thrown against us, including the COVID-19 pandemic, major storm events and unprecedented inflation for modern times."



The Mayor has great pleasure in pulling the chain for the first flush

## Any questions?

For up to date information please see our website:

 [www.centralinterceptor.co.nz](http://www.centralinterceptor.co.nz)

You can also email us at:

 [ciproject@ga-jv.com](mailto:ciproject@ga-jv.com)

Or phone:

 0800 GAJV 02 (0800425802)

Follow us:

 @gajv\_nz

 @GAJV



We encourage you to receive these updates electronically - send us your email, your current mailing address and quote "Sign me up: Rawalpindi Reserve site bulletin" to [ciproject@water.co.nz](mailto:ciproject@water.co.nz)