

# CENTRAL INTERCEPTOR BULLETIN

PS23 site, 39 Frederick Street and Hoskins Avenue, Hillsborough

**We're building the Central Interceptor, a super-sized wastewater tunnel to reduce overflows, creating a better environment for you to enjoy.**

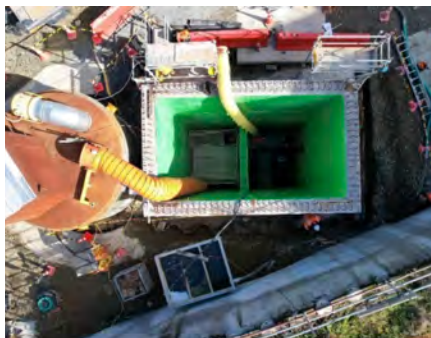
## Project milestones

Hiwa-i-te-Rangi, our main Tunnel Boring Machine (TBM) passed the 12-kilometre mark of her 16.2km journey in mid-July. She had just reached by our Mt Albert site, the sixth breakthrough of ten on her journey north. Lately, she's been making excellent progress at some 550-600m a month.

Domenica, our micro-TBM, has completed her second drive (300m) on the 1.1km, 2.4m-diameter, Link Sewer C. This ends her time on the Central Interceptor project and she has been relocated to our warehouse in Māngere for refurbishment, before being sent off to her next project.

## Pump Station 23

Work is progressing on a range of construction activities at our PS23 site. We continue to work on the diversion chamber (see image, with the green lining). When commissioned, this will divert existing wastewater flows towards the CI tunnel. Much of the work is welding of the concrete protective liner walls.



The diversion chamber will eventually be covered by a pre-cast lid which we have begun work on. Within the diversion chamber we have commenced construction of the concrete benching. This benching is the floor within the chamber that slopes to enable wastewater flows to travel to the shaft (see below, with the brown lid) which is delivered to the tunnel.

Other important work is to install stop plates in the shaft. We have two of these installed in the event of extreme weather, when we may need to restrict flows into Māngere wastewater treatment plant. To do so, we activate these gates, stopping the flow from the diversion chamber into the tunnel. This helps ensure that pressure can be safely released from the tunnel without causing damage to the Māngere shaft's pump station or tunnel structures.

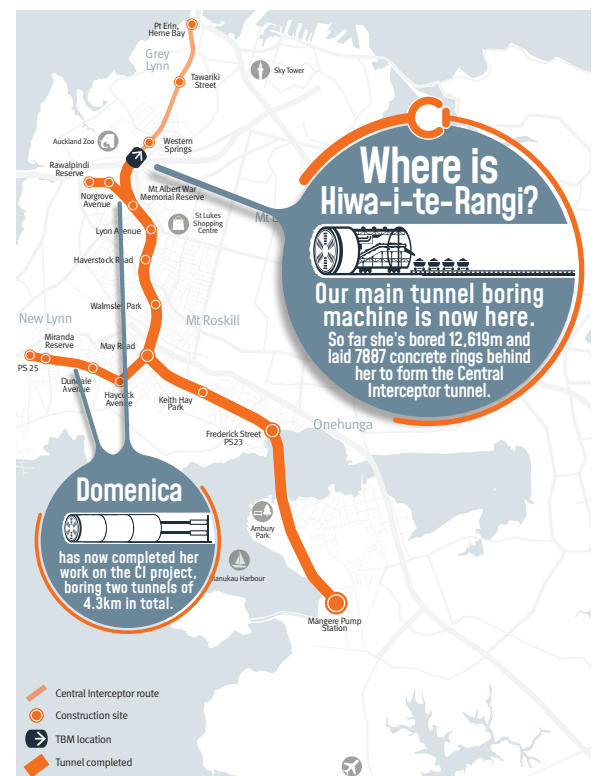


Over the next few months, we will install the stop plates and complete the benching, along with the diversion chamber roof. We will also start building reinforced concrete walls surrounding the shaft and constructing its roof slab.

## Tunnel progress

Check out our website which now has a weekly update of the TBM's progress. <https://www.watercare.co.nz/Central-interceptor/Constructing-the-Central-Interceptor>.

You can also follow us on Facebook, or Instagram.



## TELL US HOW YOU REALLY FEEL

Take the online survey at: [www.watercare.co.nz/aucklandprojects](http://www.watercare.co.nz/aucklandprojects) or scan the QR code



## A safe place to nest for our feathered friends

Watercare has acquired consent for an ecological enhancement project at our PS23 site. The site lies within the Manukau Harbour, one of the most important areas for migratory wading species and other coastal birds in the country. Unfortunately, due to increased urban development, human disturbance and pest mammals, the availability of suitable bird roosting areas has declined.

To help reverse this trend, we are building a bird roost area log piles placed in the foreshore, covered with loose shells. There will also be a salt marsh vegetation area to increase native vegetation biodiversity. This will potentially provide habitats for more and different species. We aim to both restore and enhance the habitat of the site for a variety of coastal birds, including those in the "At Risk" and "Threatened" species.



## Who it takes to build the Central Interceptor

The Central Interceptor project stretches across 17 sites from Māngere to Pt Erin, Herne Bay. Each of these sites has a team of people working on various activities and construction stages. There are numerous jobs on this project, each requiring different skills, backgrounds, experience and qualifications. This regular feature will give some insight into one of the many important roles on the project.

### Stakeholder Advisor

#### What does a Senior Stakeholder Advisor do?

A Stakeholder Advisor is the local face of the project. We are the people you meet first to tell you all about the project and how it might affect the neighbours. We are responsible for keeping all our stakeholders, including neighbours and other interested parties informed about what's happening on our sites and the CI project.

#### What qualifications do you need to be a Senior Stakeholder Advisor?

There is no formal qualification to be a stakeholder advisor. There are many courses that you can do in stakeholder engagement but ultimately you need to be able to build relationships and be good at problem solving on the go. Communication qualifications are always a bonus as the job is all about communicating with people.

#### What are some of the daily activities of a Senior Stakeholder Advisor?

No two days are ever the same on the project. The role is extremely varied and that is what keeps it interesting. One day we are writing and delivering bulletins like this and the next we are putting up signs and asking people to move their cars so our large equipment can enter the site.

We also get to do some cool things like talk to local schools and community groups about how amazing our project is. We run open days on weekends so the public so can see all the amazing things that our site teams are doing.

Unfortunately, with a project this complex, we sometimes have to deal with complaints, so when this happens, we work with the teams involved to make sure we are doing everything we can to reduce the impact on our neighbours.

#### What are the challenges of this role?

The biggest challenge is we never fully know

what is under the ground until we start excavating. Sometimes this means that plans change quickly and we need to go back to people and let them know plans have changed. Sometimes this means lots of door knocking, texts and phone calls and solving problems as they arise.

#### Is there anything about this role that would surprise people?

We start talking with our neighbours long before the construction starts. We know most of our neighbours and their families by name and we always love to stop to say hello when we see them.



### Any questions?

For up to date information please see our website:

 [www.centralinterceptor.co.nz](http://www.centralinterceptor.co.nz)

You can also email us at:

 [ciproject@gajv.com](mailto:ciproject@gajv.com)

Or phone:

 **0800 GAJV 02 (0800425802)**

Follow us:

 [@gajv\\_nz](https://www.instagram.com/gajv_nz)

 [@GAJV](https://www.linkedin.com/company/gajv)



We encourage you to receive these updates electronically - send us your email, your current mailing address and quote "Sign me up: PS23 site bulletin" to [ciproject@water.co.nz](mailto:ciproject@water.co.nz)