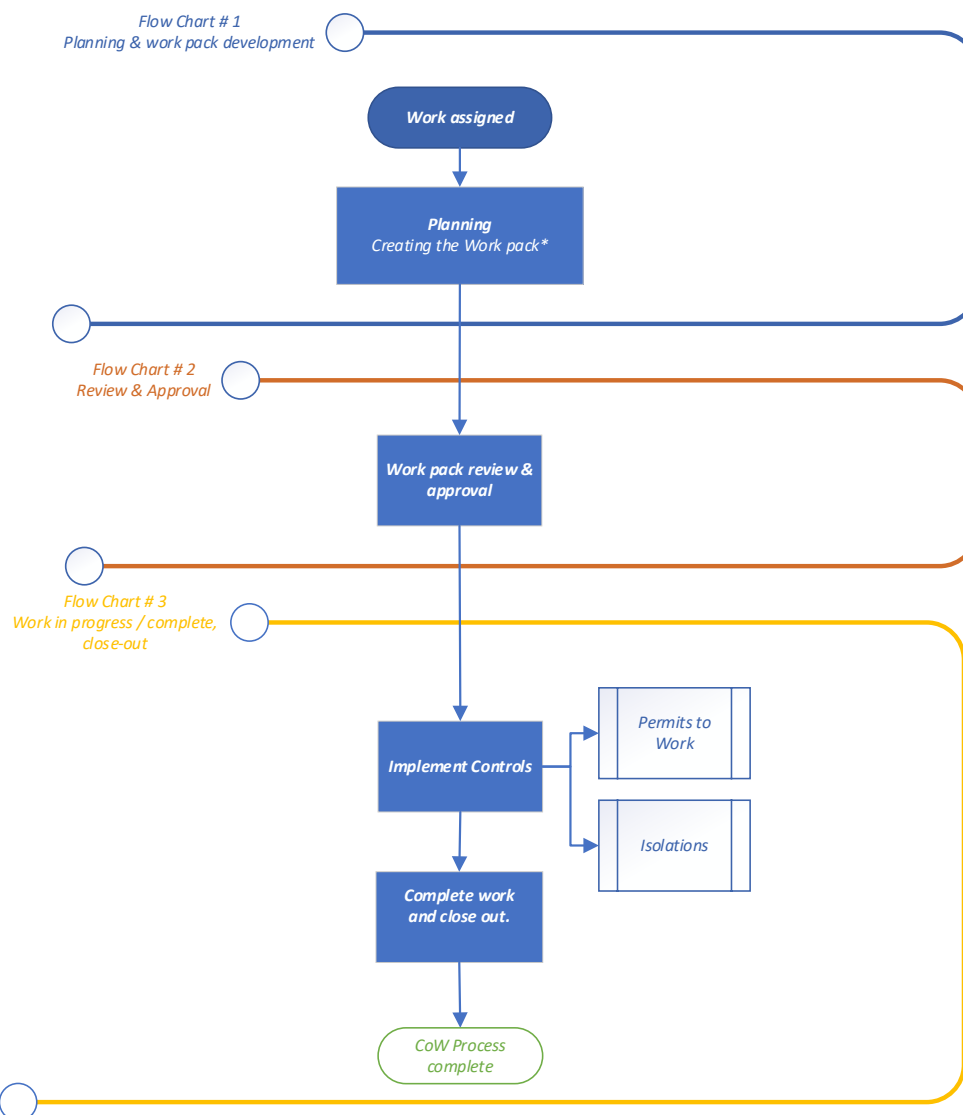
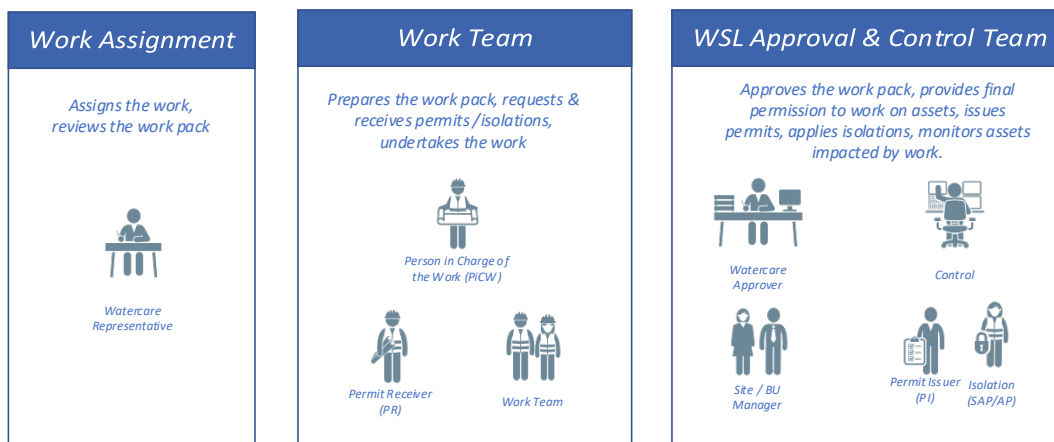
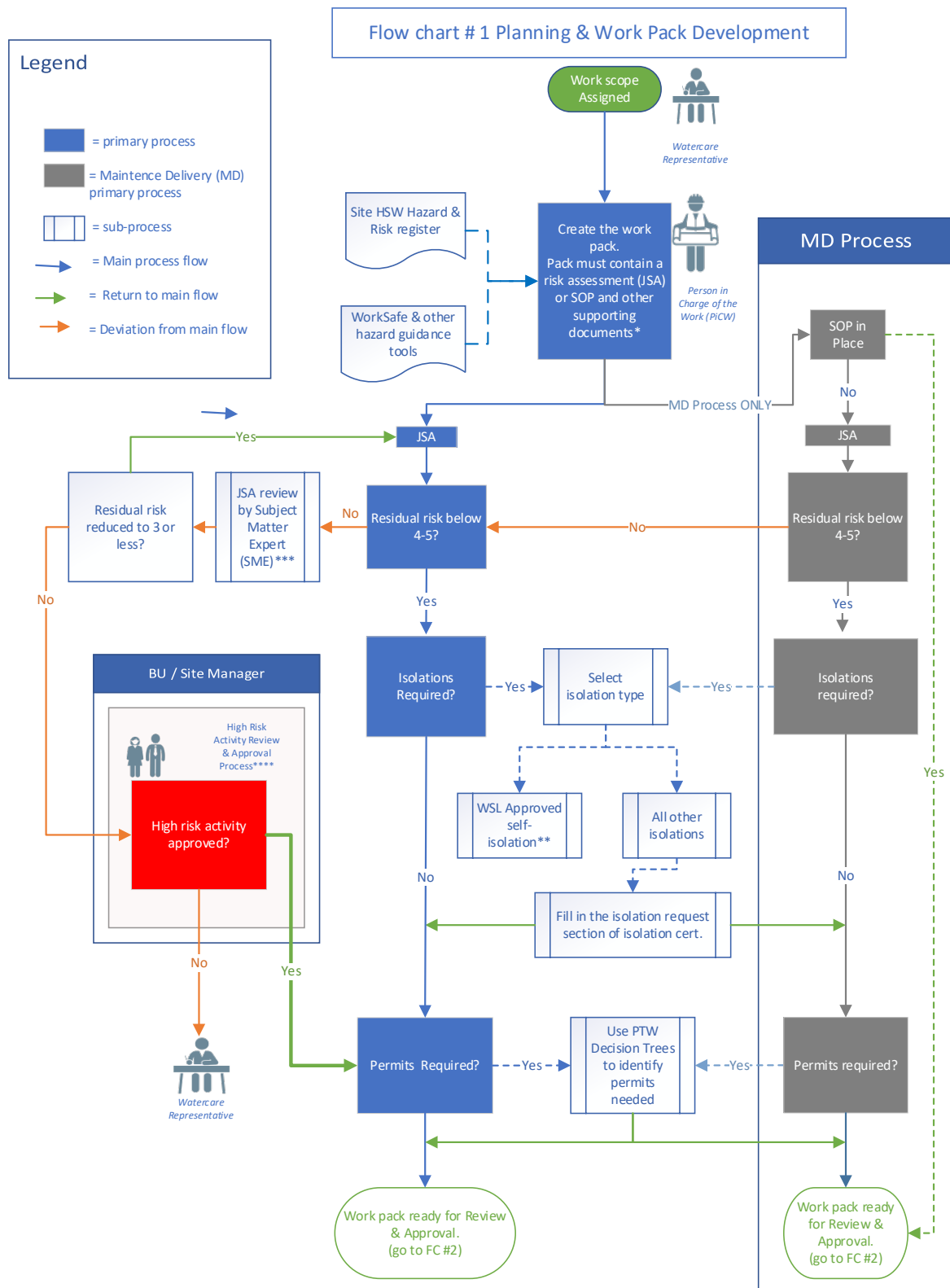


Control of Work Process - work flow



* Work Pack documents must include a risk assessment (JSA) or an SOP or a combination of both. Additional documents may include Permit Certificates, Isolation Requests, plans and drawings, work methodologies and other relevant information. Refer Pg's 23-31 Control of Work Document

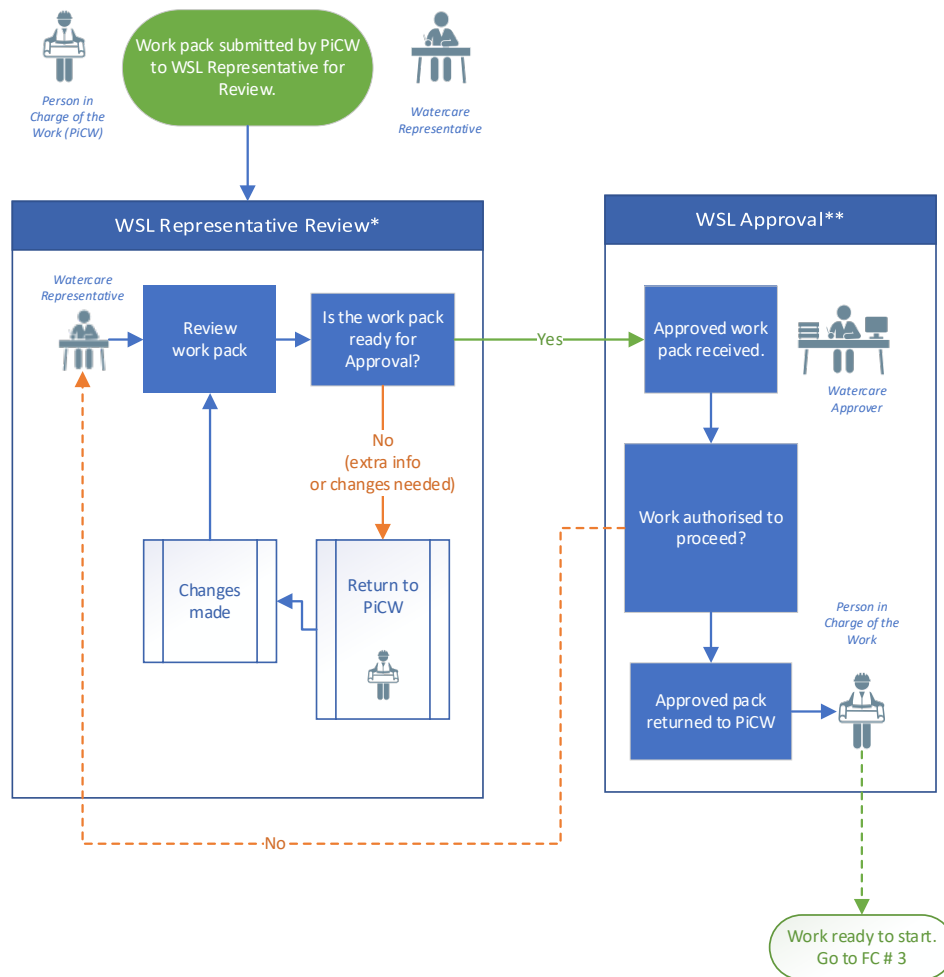


** Watercare-approved self-isolation within one working shift, four or less isolation points, applied by WSL approved personnel.

*** SME - A competent person who understands the work, risks and controls – refer pg 16 of Control of Work Manual

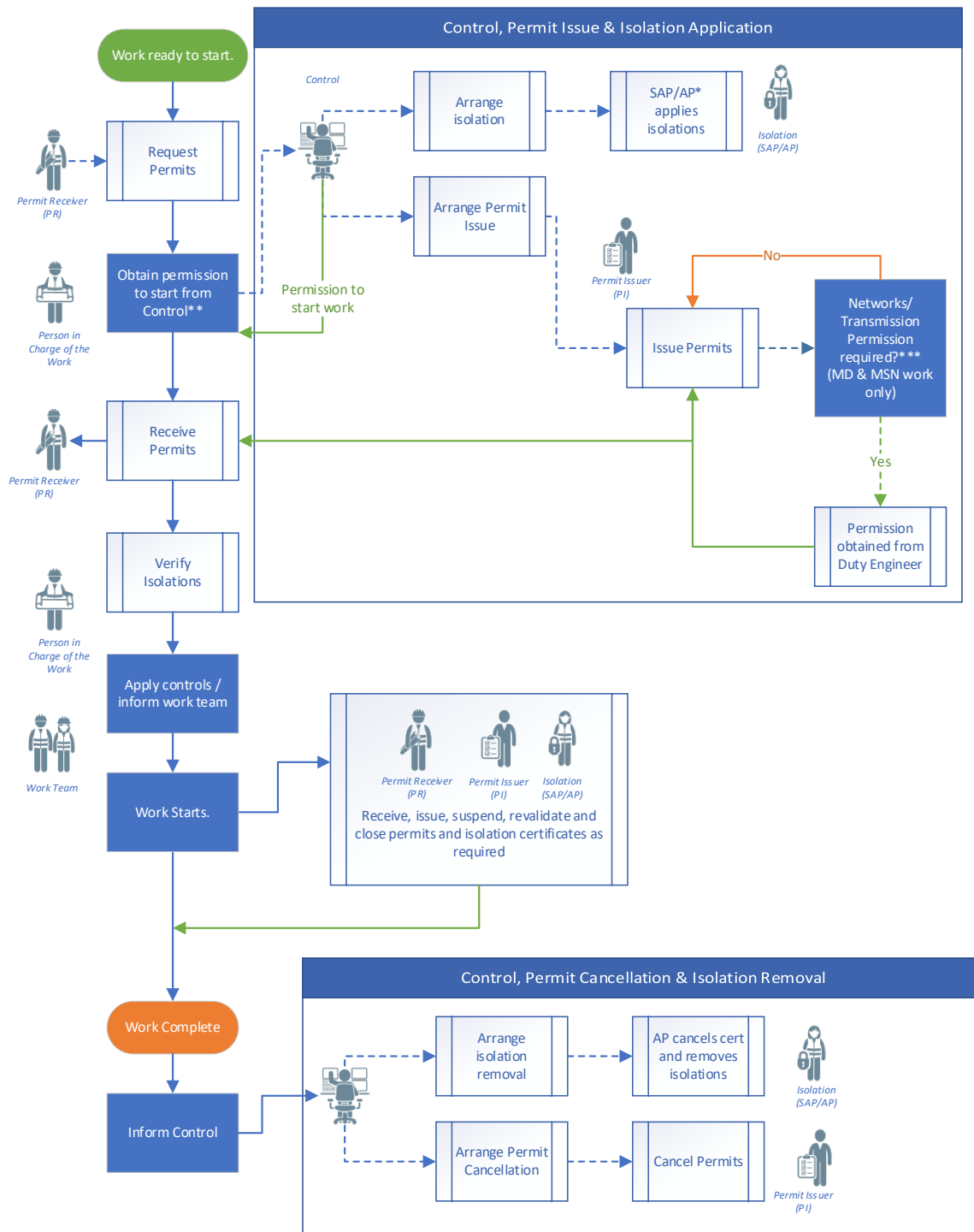
**** High Risk Approval required if after planning safety measures to reduce risks, the level of risk remaining still considered high (4) or very high (5).

Flow chart # 2 Review, Approval,



* Watercare Representative Review – Refer Pg's 10 & 11 Control of Work Manual
 ** Watercare Approval – Refer Page 17 Control of Work Manual

Flow chart #3: Work in Progress, Complete / Close-out



* SAP / AP (Senior Approved Person, or Approved Person) trained and approved by Watercare to apply and remove isolations.

** Control – The person operating the asset at the time of the work. Depending on the site or asset this may be a Process controller (Rosedale), Control room operator, Process technician, Networks / Transmission Duty Engineer.

*** Networks / Transmission Permission – MD and MSN can issue their own permits for work on these assets. However they must obtain permission before issuing the permit.