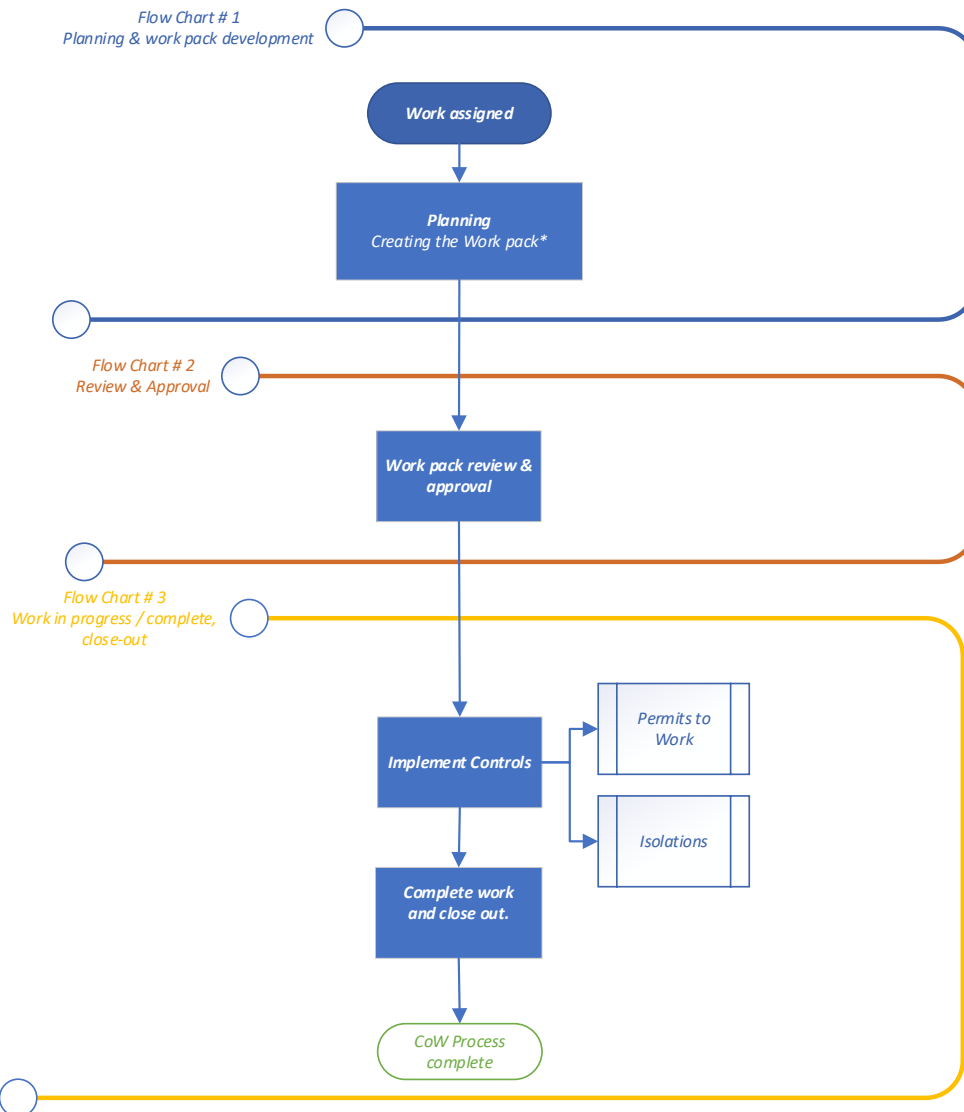
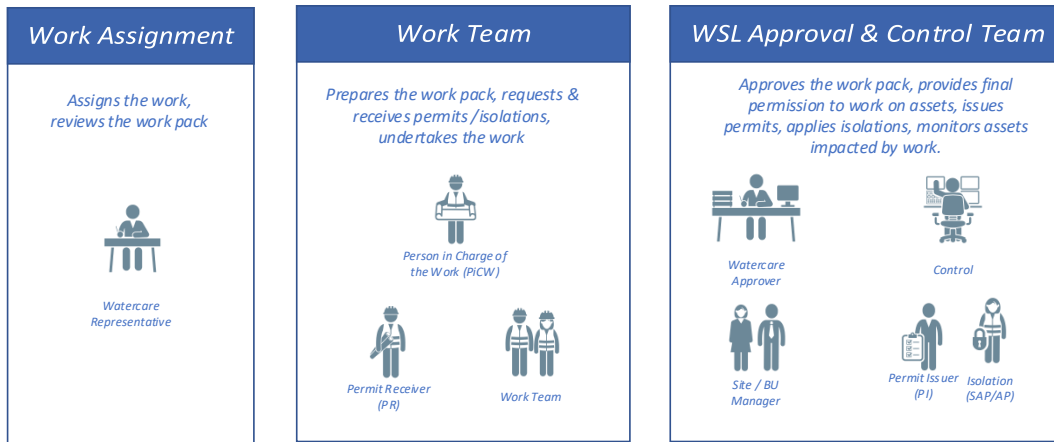


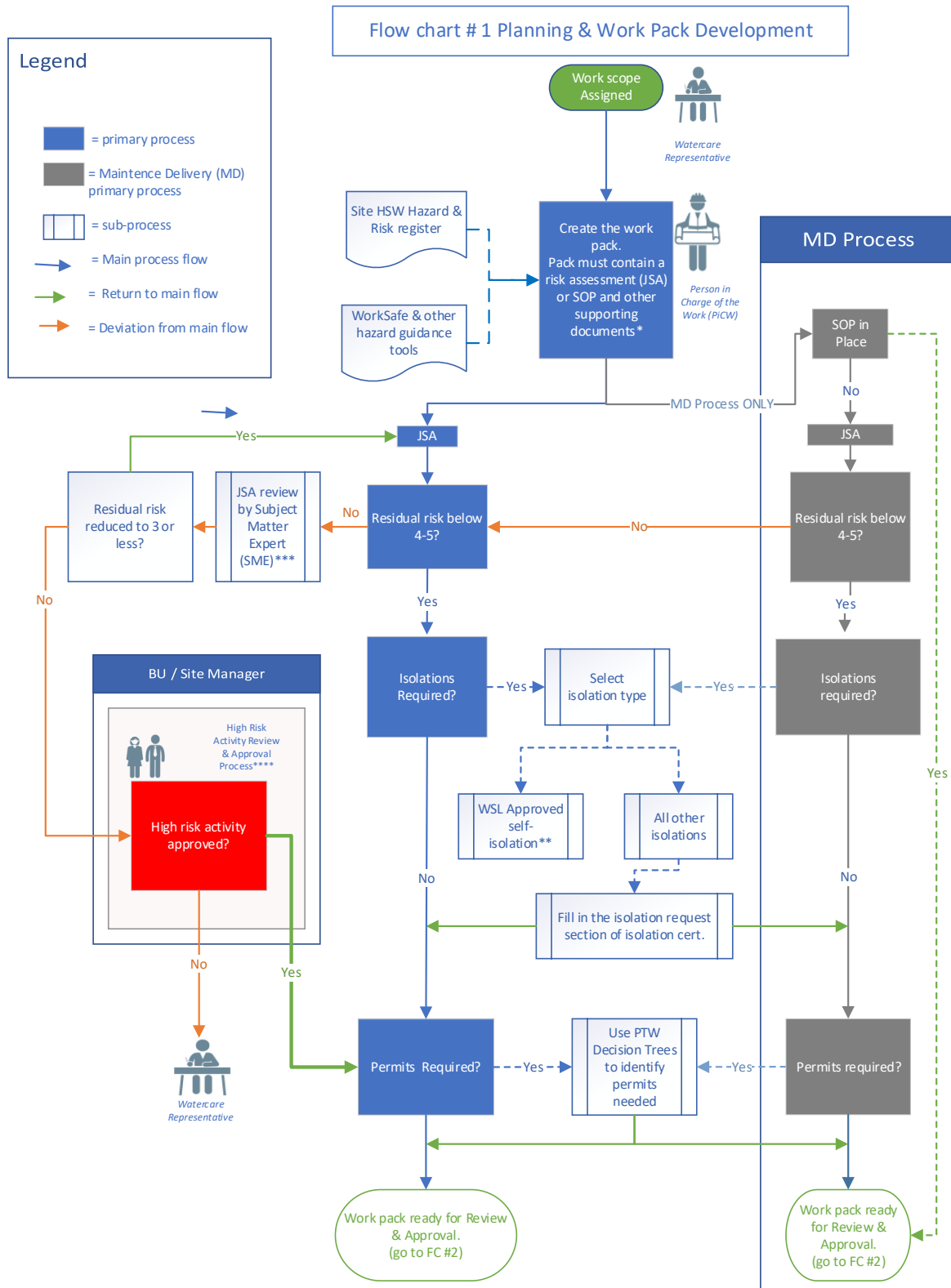
# Control of Work Process – Workflow

Control of Work Process - work flow



\* Work Pack documents must include a risk assessment (JSA) or an SOP or a combination of both. Additional documents may include Permit Certificates, Isolation Requests, plans and drawings, work methodologies and other relevant information. Refer Pgs 23-31 Control of Work Document

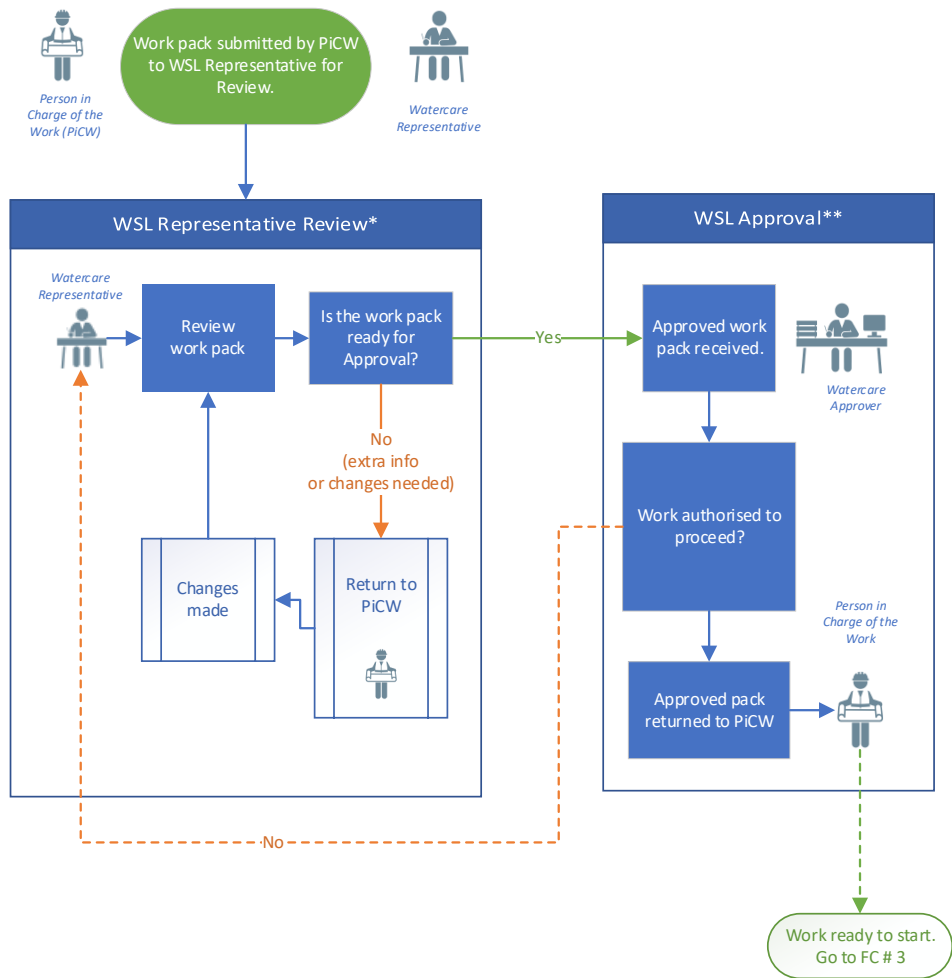
# Control of Work Process – Workflow



\*\* Watercare-approved self-isolation within one working shift, four or less isolation points, applied by WSL approved personnel.  
 \*\*\* SME - A competent person who understands the work, risks and controls – refer pg 16 of Control of Work Manual  
 \*\*\*\* High Risk Approval required if after planning safety measures to reduce risks, the level of risk remaining still considered high (4) or very high (5).

# Control of Work Process – Workflow

Flow chart # 2 Review, Approval,

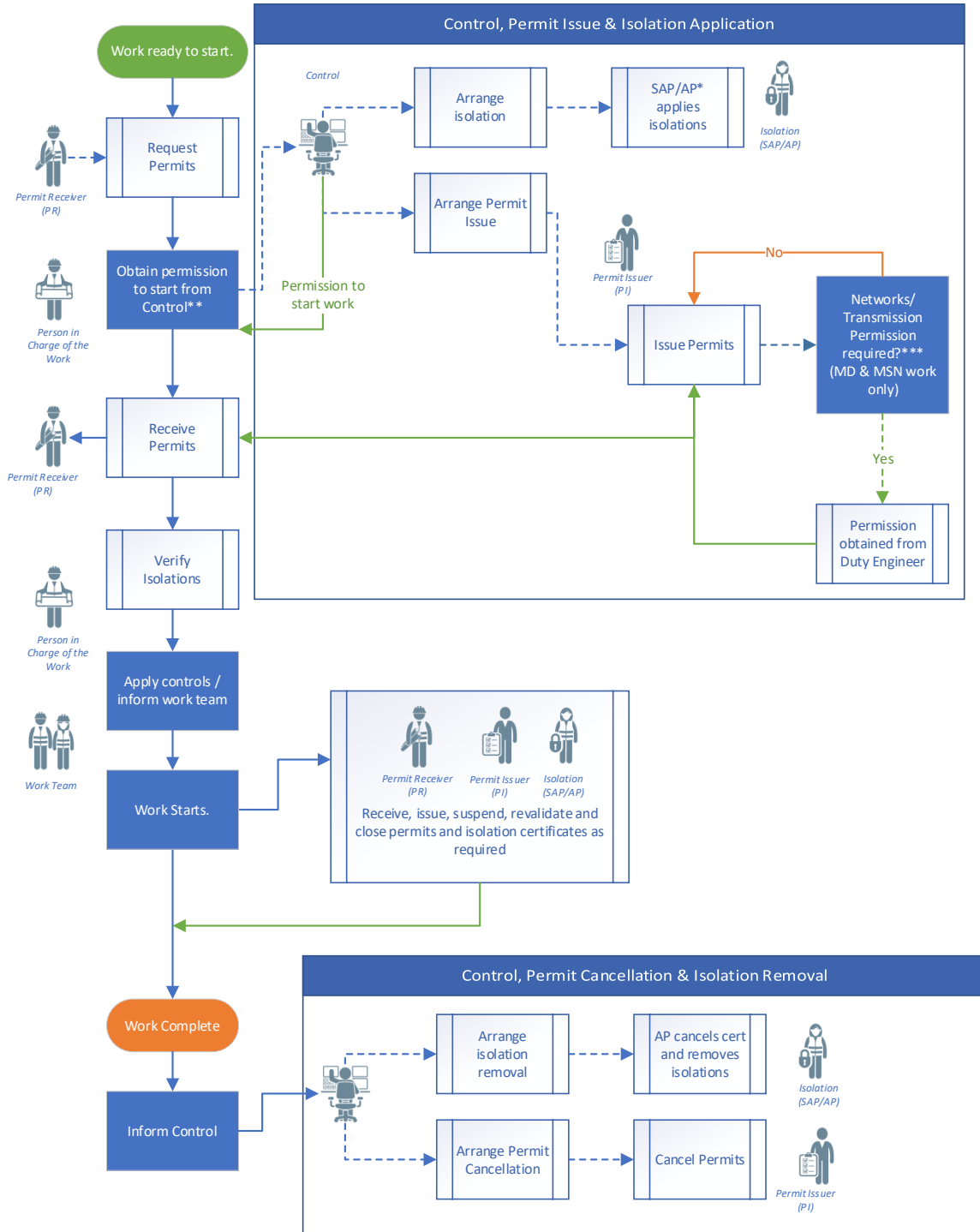


\* Watercare Representative Review – Refer Pg's 10 & 11 Control of Work Manual

\*\* Watercare Approval – Refer Page 17 Control of Work Manual

# Control of Work Process – Workflow

Flow chart # 3: Work in Progress, Complete / Close-out



\* SAP / AP (Senior Approved Person, or Approved Person) trained and approved by Watercare to apply and remove isolations.  
 \*\* Control – The person operating the asset at the time of the work. Depending on the site or asset this maybe a Process controller (Rose dale), Control room operator, Process technician, Networks /Transmission Duty Engineer.  
 \*\*\* Networks /Transmission Permission – MD and MSN can issue their own permits for work on these assets. However they must obtain permission before issuing the permit.