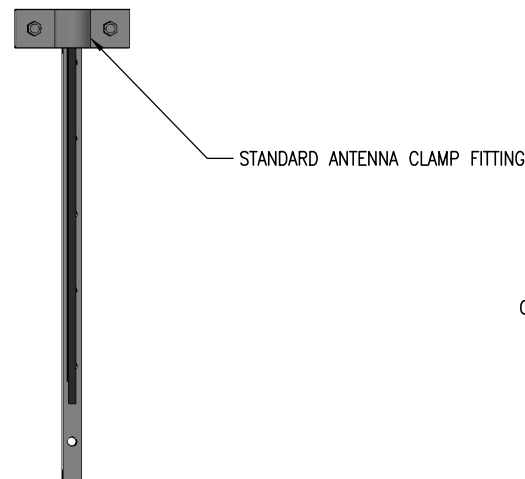
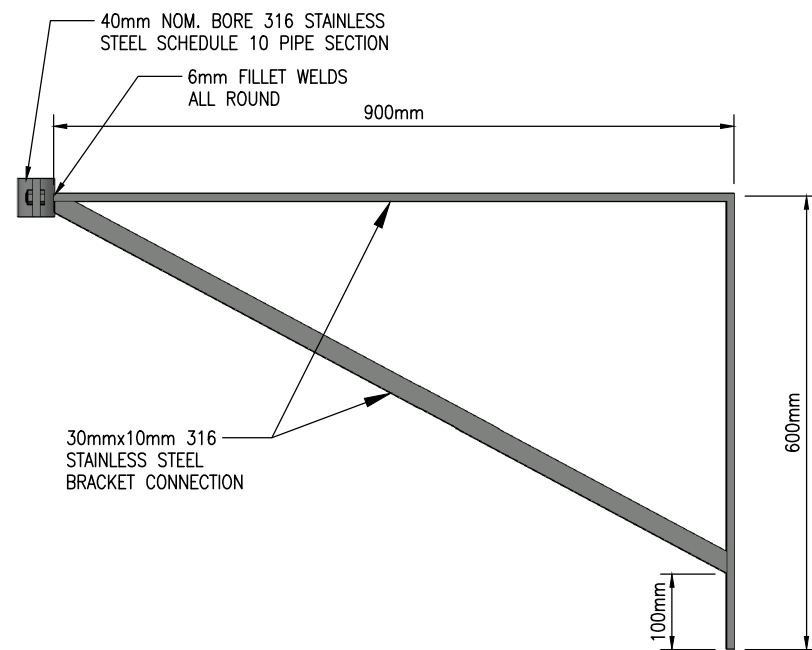


DRAWING INDEX: ANTENNA POLE DETAILS

DRAWING NO.	REVISION	DRAWING TITLE
2014139.001	D	ANTENNA POLE SELECTION ONE – ANTENNA STAND-OFF BRACKET
2014139.002	E	ANTENNA POLE SELECTION TWO – BSP FOLDING ANTENNA BRACKET
2014139.003	E	ANTENNA POLE SELECTION THREE – DOUBLE BOTTOM BRACKET FOLDING ANTENNA
2014139.004	E	ANTENNA POLE SELECTION FOUR – FOLDING ANTENNA BRACKET CHANNEL
2014139.005	E	ANTENNA POLE SELECTION FIVE – ANTENNA FOLDING PANEL
2014139.006	C	ANTENNA POLE SELECTION SIX – BSP FOLDING ANTENNA BRACKET
2014139.007	C	ANTENNA POLE SELECTION SEVEN – DOUBLE BOTTOM BRACKET FOLDING ANTENNA
2014139.008	B	ANTENNA POLE FIXING DETAILS – TYPE 5 PILE DETAIL
2014139.009	B	ANTENNA POLE FIXING DETAILS – TYPE 5 SLAB DETAIL
2014139.010	A	ANTENNA POLE FIXING DETAILS – TYPE 5 SLAB SECTION
2014139.011	B	ANTENNA POLE FIXING DETAILS – TYPE 2 & 3 DETAIL
2014139.012	B	ANTENNA POLE FIXING DETAILS – TYPE 4 DETAIL
2014139.013	B	ANTENNA POLE FIXING DETAILS – TYPE 1 DETAIL



**FRONT VIEW**  
STAND-OFF BRACKET  
SCALE (A3) : NTS



**SIDE VIEW**  
STAND-OFF BRACKET  
SCALE (A3) : NTS

COMPRESSION CABLE GLAND TO BE INSTALLED  
**NOTE 7**

32mm NOM. BORE  
316 STAINLESS STEEL  
SCHEDULE 10 PIPE SECTION

316 STAINLESS STEEL REDUCER  
**NOTE 8**

20mm NOM. BORE 316 STAINLESS  
STEEL SCHEDULE 10 PIPE

**NOTE 3**

**NOTE 4**  
**NOTE 5**

**NOTE 1**

EARTHING  
CONNECTION BOLT

STAINLESS STEEL 316L  
50mm x 50mm x 5mm  
(6FWAR TO CLAMP)

6mm FILLET WELDS ALL ROUND

6mm FILLET WELDS ALL ROUND

13mmØ

**ISOMETRIC VIEW**  
STAND OFF BRACKET  
SCALE (A3) : NTS

**NOTES:**

1. POLE HEIGHT RANGES FROM 0.8m TO 1m.
2. POLE AND BRACKET SIZES DETAILED WITHIN THE DRAWING AS A MINIMUM. HOWEVER, IT IS ESSENTIAL TO TAKE WIND LOADS INTO ACCOUNT WHEN SIZING ANTENNA POLE DIAMETERS (ANTENNA POLE AND ASSOCIATED ANTENNA BRACKET SHOULD THEN BE SIZED TO SUIT).
3. ANTENNA POLE SHALL BE 316 STAINLESS STEEL PIPE SCHEDULE 10.
4. THIS BRACKET TYPE IS APPLICABLE FOR STANDOFF BUILDINGS WITH EXTENDED GUTTERS OR RIDGELINES.
5. BRACKET SHALL BE PLACED AT A HEIGHT WHERE IT IS ACCESSIBLE WITH A LADDER AND THE PERSONNEL STEPPING POINT ON THE LADDER SHALL NOT EXCEED 2m FROM THE GROUND).
6. REFER TO DRAWING 2014139.013 FOR TYPE 1 FIXING DETAILS.
7. CABLE GLAND SHALL BE SIZED TO SUIT CABLE SIZE.
8. REDUCER SIZE IS DEPENDENT ON CABLE GLAND SIZE.

\* WSL DRAWINGS 2014139.001 - 013 ARE TO BE READ IN CONJUNCTION. CONTRACTOR TO CONFIRM WIND SPEED, SITE CONDITIONS, AND SUBSTRATE MATERIALS (GROUND AND WALL/CABINET) ARE ADEQUATE FOR THE ANTENNA DETAILS PROVIDED. ALL ANTENNA INSTALLATIONS MUST COMPLY WITH THE NOTES AND REQUIREMENTS OUTLINED ON THE RELEVANT DRAWINGS. CONTRACTOR TO NOTIFY NECESSARY PARTIES IF SITE DOES NOT COMPLY WITH THE REQUIREMENTS OR IF SITE CONDITIONS REQUIRE A SPECIFIC ENGINEERING DESIGN OUTSIDE THE SCOPE OF WHAT IS PROVIDED.

**FOR CONSTRUCTION\***

D	10-24	ISSUED FOR CONSTRUCTION - REVISED	WSL	WSL	DESIGNED	WATERCARE	09-23
C	08-24	ISSUED FOR CONSTRUCTION - REVISED	WSL	WSL	DES. APPROVED	WATERCARE	09-23
B	02-24	ISSUED FOR CONSTRUCTION - WITH ACH REVIEW COMMENTS	WSL	WSL	DRAWN	A. SEPNO	09-23
A	09-23	ISSUED FOR REVIEW	-	-	DWG. APPROVED	D. IBRAHIM	09-23
-	02-23	ISSUED FOR CONSTRUCTION	-	-	WSL DESIGN MGMT.		
ISSUE	DATE	AMENDMENT	BY	APPD.	WSL PROJ. LEAD		

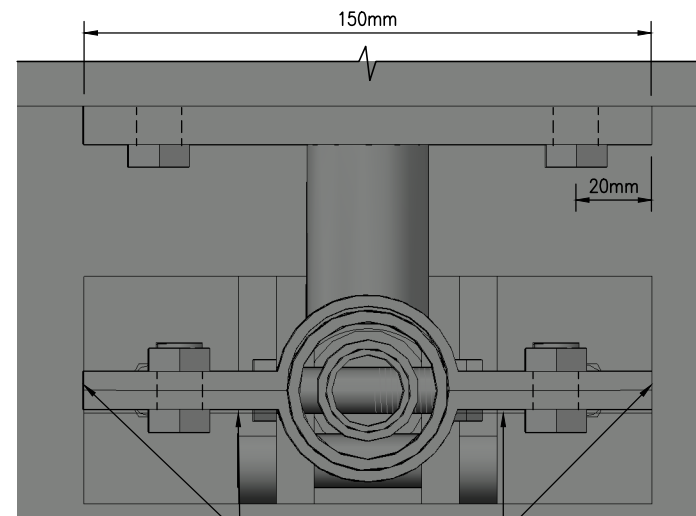


**WATERCARE SERVICES LIMITED**  
**STANDARD DRAWING**

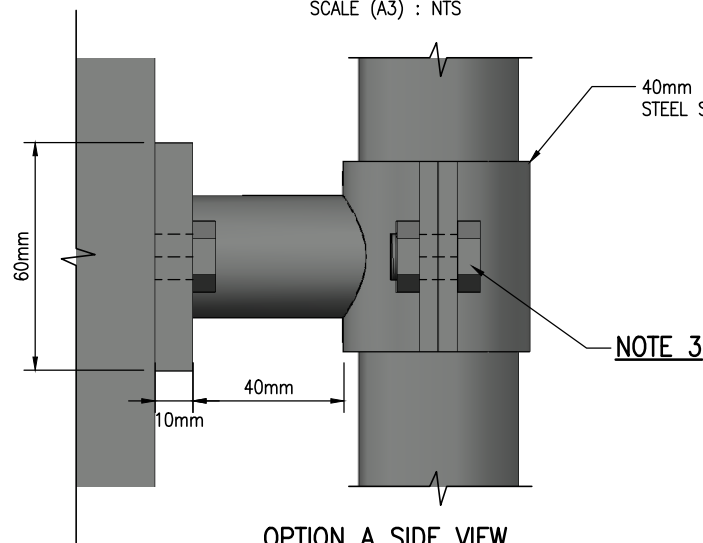
ANTENNA POLE SELECTION ONE - ANTENNA STAND-OFF BRACKET

CAD FILE	2014139.001D	DATE	18-10-24
ORIGINAL SCALE	A3	CONTRACT No.	-
REF No.	-		
DWG No.	2014139.001	ISSUE	D

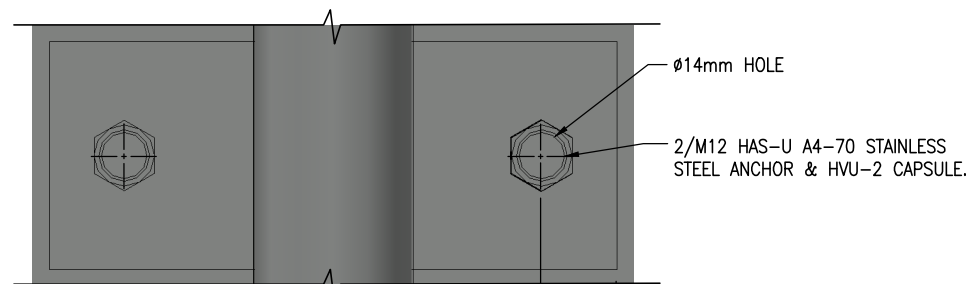




**TOP VIEW**  
ANTENNA POLE TO CABINET MOUNTING BRACKET  
SCALE (A3) : NTS



**OPTION A SIDE VIEW**  
ANTENNA POLE TO CABINET MOUNTING BRACKET  
SCALE (A3) : NTS

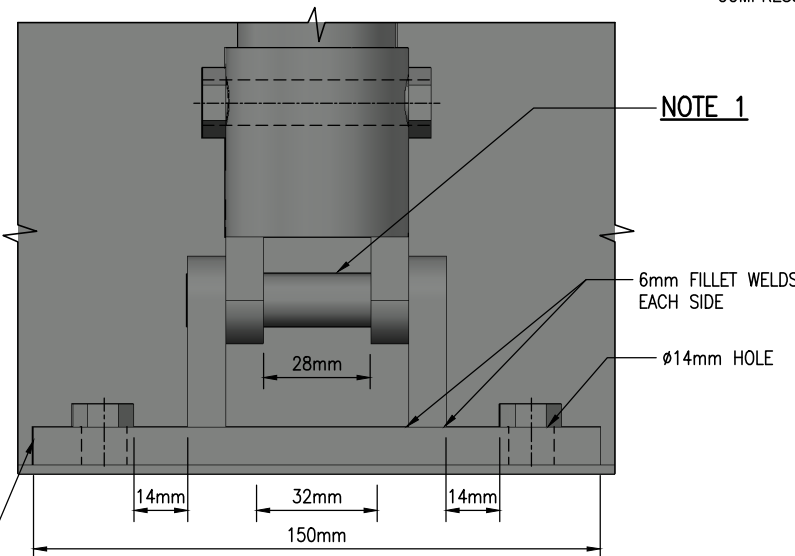


**OPTION A FRONT VIEW**  
ANTENNA POLE TO CABINET MOUNTING BRACKET  
SCALE (A3) : NTS

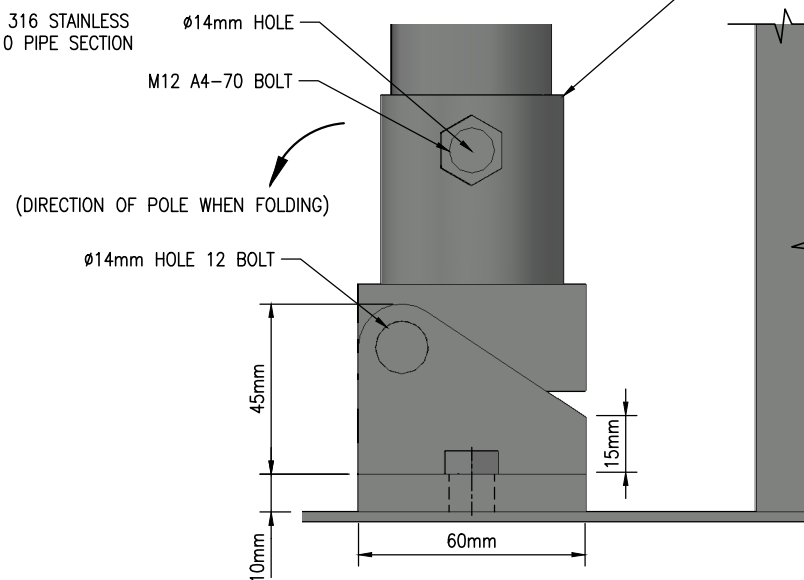
\* WSL DRAWINGS 2014139.001 - 013 ARE TO BE READ IN CONJUNCTION. CONTRACTOR TO CONFIRM WIND SPEED, SITE CONDITIONS, AND SUBSTRATE MATERIALS (GROUND AND WALL/CABINET) ARE ADEQUATE FOR THE ANTENNA DETAILS PROVIDED. ALL ANTENNA INSTALLATIONS MUST COMPLY WITH THE NOTES AND REQUIREMENTS OUTLINED ON THE RELEVANT DRAWINGS. CONTRACTOR TO NOTIFY NECESSARY PARTIES IF SITE DOES NOT COMPLY WITH THE REQUIREMENTS OR IF SITE CONDITIONS REQUIRE A SPECIFIC ENGINEERING DESIGN OUTSIDE THE SCOPE OF WHAT IS PROVIDED.

**FOR CONSTRUCTION\***

150mmx60mmx10mm 316 STAINLESS STEEL PLATE WITH 2/M12 HAS-U A4-70 STAINLESS STEEL ANCHOR & HVU-2 CAPSULE.



**FRONT VIEW**  
ANTENNA POLE FOLDING BOTTOM HINGE  
SCALE (A3) : NTS



**SIDE VIEW**  
ANTENNA POLE FOLDING BOTTOM HINGE  
SCALE (A3) : NTS

SUMMARY TABLE CONDITIONS			
WIND ZONE	MAX HEIGHT	SECTION SIZE	ANTENNA TYPE
EXT. HIGH	3.5m	32mm NOM BORE SCHEDULE 80	RFI YH03
EXT. HIGH	4.0m	32mm NOM BORE SCHEDULE 80	LTE - GO WIRELESS ANT-252
EXT. HIGH	4.0m	32mm NOM BORE SCHEDULE 10	RFI CD29, RFI CD50-68-70, RFI CD93-71-70, RFI YBSS6-61, RFI YB6-61, LTE - GO WIRELESS ANT-288

**NOTE 1**

6mm FILLET WELDS EACH SIDE  
Ø14mm HOLE

COMPRESSION CABLE GLAND TO BE INSTALLED  
**NOTE 13**

MAXIMUM HEIGHT OF 4m  
REFER TO SUMMARY TABLE CONDITIONS

20mm NOM. BORE 316 STAINLESS STEEL SCHEDULE 10 PIPE  
32mm NOM BORE 316 STAINLESS STEEL SOCKET  
32mm NOM BORE 316 STAINLESS STEEL PIPE/SOCKET SECTION, REFER TO THE SUMMARY TABLE CONDITIONS FOR PIPE SCHEDULE.

**NOTE 5**

EARTHING CONNECTION BOLT

**NOTE 7**  
**NOTE 8**

**ISOMETRIC VIEW**  
SCALE (A3) : NTS

316 STAINLESS STEEL REDUCER  
**NOTE 14**

**NOTE 2**  
**NOTE 11**

**NOTE 9**

#### NOTES:

- PERMANENT WELDED PIN FOR ANTENNA FOLDING ACTION. PIN SHALL BE WELDED TO BASE AS SHOWN.
- MULTIPLE CABINET MOUNTING BRACKETS CAN BE ADDED FOR SUPPORT AS NECESSARY DEPENDENT ON STRUCTURE IT IS BEING MOUNTED TO.
- REMOVABLE BOLTS M12 A4-70.
- ANTENNA POLE CAN BE PLACED AGAINST CABINET AS SHOWN OR AGAINST ANOTHER SUPPORT STRUCTURE OF SUITABLE STRENGTH.
- ANTENNA POLE SHALL BE 316 STAINLESS STEEL PIPE AND SCHEDULE TYPE AS PER SUMMARY TABLE CONDITIONS.
- POLE AND BRACKET SIZES DETAILED WITHIN THE DRAWING AS A MINIMUM BASED ON SUMMARY TABLE CONDITION. DEVIATION FROM THE SUMMARY TABLE CONDITIONS WILL REQUIRE AN ASSESSMENT OF POLE AND BRACKET SIZES.
- ANTENNA POLE FOLDING BOTTOM CAN BE ORIENTED AS SHOWN IF OPTION A BRACKET IS USED.
- ANTENNA POLE FOLDING BOTTOM CAN BE ROTATED 90° CLOCKWISE OR ANTI-CLOCKWISE IF OPTION B BRACKET IS USED AS SHOWN IN DRAWING 2014139.007.
- MOUNT TOP FIXING POINT AS HIGH ON STRUCTURE. MINIMUM OF 1m FOR MAXIMUM HEIGHT 4m.
- FOR THIN CABINET WALLS, EXTRA FIXING IS REQUIRED TO INCREASE STRENGTH AND DISTRIBUTE FORCE OVER A GREATER AREA. THIS IS TO ENSURE THE WALL IS NOT SUSCEPTIBLE TO FAILURE UNDER THE WIND LOAD CONDITIONS.
- REFER TO DRAWING 2014139.011 FOR TYPE 3 FIXING DETAILS AND STAND OFF DETAIL TO ACCOUNT FOR EAVES.
- IT IS ESSENTIAL TO CHECK THE SITE SPECIFIC WIND ZONE PRIOR TO SELECTING THE POLE HEIGHT, SECTION SIZE AND PLINTH. THE SUMMARY TABLE IS APPLICABLE AND ONLY DESIGNED FOR WIND ZONES UP TO EXTREME-HIGH WIND CONDITIONS RANGING 50-55 m/s. LOCATIONS WITH WIND SPEED GREATER THAN 55 m/s WILL REQUIRE SPECIFIC ENGINEERING DESIGN ASSESSMENT. THIS IS TO CONFIRM WHETHER THE ANTENNA TYPE WITH RECOMMENDED HEIGHT, SECTION SIZE AND PLINTH DIMENSIONS WILL STILL BE SUITABLE FOR THE SITE. OTHERWISE, ALTERNATIVE POLE HEIGHT, SECTION SIZE AND PLINTH DIMENSIONS SHOULD BE CONSIDERED AND SPECIFIED AS REQUIRED.
- CABLE GLAND SHALL BE SIZED TO SUIT CABLE SIZE.
- REDUCER SIZE IS DEPENDENT ON CABLE GLAND SIZE.

E	10-24	ISSUED FOR CONSTRUCTION - REVISED	WSL	WSL	DESIGNED	WATERCARE	09-23
D	08-24	ISSUED FOR CONSTRUCTION - REVISED	WSL	WSL	DES. APPROVED	WATERCARE	09-23
C	06-24	ISSUED FOR CONSTRUCTION - REVISED	WSL	WSL	DRAWN	A. SEPNO	09-23
B	02-24	ISSUED FOR CONSTRUCTION - WITH ACH REVIEW COMMENTS	WSL	WSL	DWG. APPROVED	D. IBRAHIM	09-23
A	09-23	ISSUED FOR REVIEW	-	-	WSL DESIGN MGMT.		
-	02-23	ISSUED FOR CONSTRUCTION	-	-	WSL PROJ. LEAD		
ISSUE	DATE	AMENDMENT	BY	APPD.		BY	DATE



## WATERCARE SERVICES LIMITED STANDARD DRAWING

ANTENNA POLE SELECTION THREE - DOUBLE BOTTOM BRACKET FOLDING ANTENNA

CAD FILE	2014139.003E	DATE	18-10-24
ORIGINAL SCALE	A3 NTS	CONTRACT No.	-
REF No.	-		
DWG No.	2014139.003	ISSUE	E

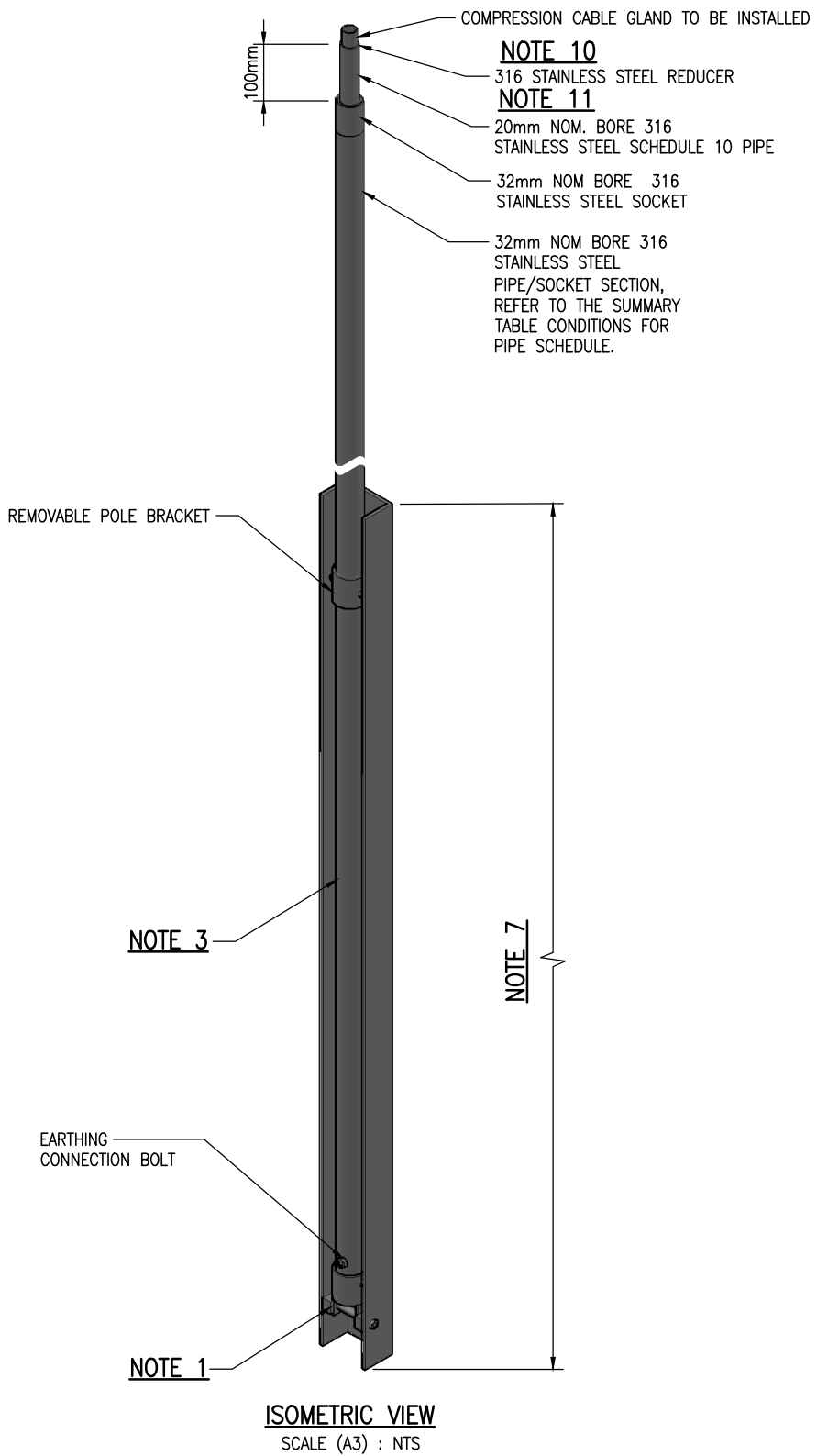
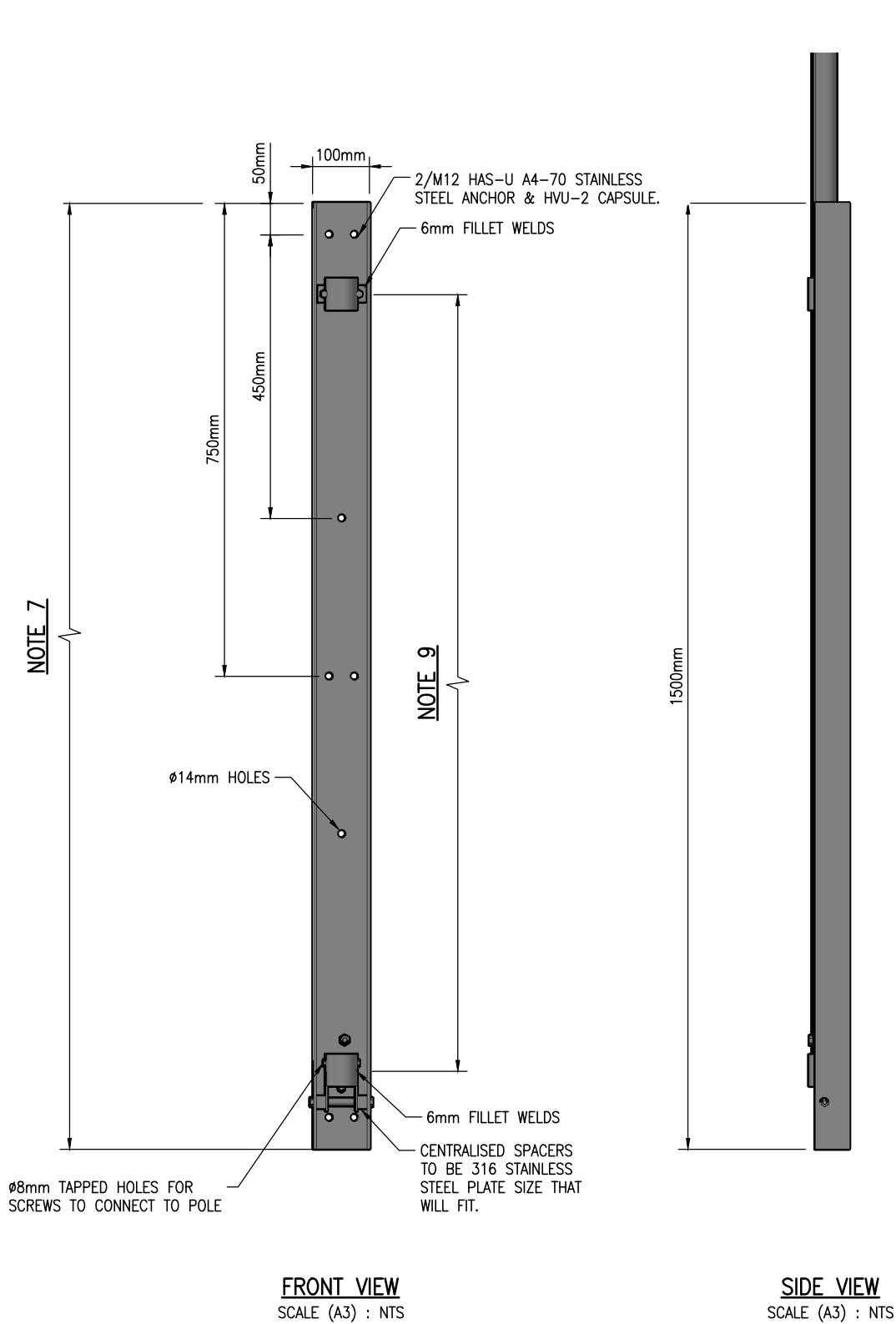
SUMMARY TABLE CONDITION			
WIND ZONE	MAX HEIGHT	SECTION SIZE	ANTENNA TYPE
VERY HIGH	4.0m	32mm NOM BORE SCHEDULE 80	RFI YH03
VERY HIGH	4.5m	32mm NOM BORE SCHEDULE 10	LTE – GO WIRELESS ANT-252, RFI CD29, RFI CD50-68-70, RFI CD93-71-70, RFI YBSS6-61, RFI YB6-61, LTE – GO WIRELESS ANT-288
EXT. HIGH	3.5m	32mm NOM BORE SCHEDULE 80	RFI YH03
EXT. HIGH	5.0m	32mm NOM BORE SCHEDULE 80	LTE – GO WIRELESS ANT-252, RFI CD29, RFI CD50-68-70, RFI CD93-71-70, RFI YBSS6-61, RFI YB6-61, LTE – GO WIRELESS ANT-288
EXT. HIGH	4.0m	32mm NOM BORE SCHEDULE 10	RFI CD29, RFI CD50-68-70, RFI CD93-71-70, RFI YBSS6-61, RFI YB6-61, LTE – GO WIRELESS ANT-288

NOTES:

- HINGED AT THE BOTTOM AND CENTRALISED SPACERS PLACED TO STOP BOTTOM MOVING.
- POLE CHANNEL CAN BE PLACED AGAINST STRUCTURE.
- ANTENNA POLE SHALL BE 316 STAINLESS STEEL PIPE AND SCHEDULE TYPE AS PER SUMMARY TABLE CONDITIONS.
- POLE AND BRACKET SIZES DETAILED WITHIN THE DRAWING AS A MINIMUM BASED ON SUMMARY TABLE CONDITION. DEVIATION FROM THE SUMMARY TABLE CONDITIONS WILL REQUIRE AN ASSESSMENT OF POLE AND BRACKET SIZES.
- THIS BRACKET IS APPLICABLE FOR BUILDINGS WITH SOLID WALLS OR IF ADDITIONAL HEIGHT IS REQUIRED FOR SUITABLE SIGNAL READINGS.
- REFER TO DRAWING 2014139.012 FOR TYPE 4 FIXING DETAILS.
- MINIMUM HEIGHT OF 1.5m
- IT IS ESSENTIAL TO CHECK THE SITE SPECIFIC WIND ZONE PRIOR TO SELECTING THE POLE HEIGHT AND SECTION SIZE. THE SUMMARY TABLE IS APPLICABLE AND ONLY DESIGNED FOR WIND ZONES UP TO EXTREME-HIGH WIND CONDITIONS RANGING 50-55 m/s. LOCATIONS WITH WIND SPEED GREATER THAN 55 m/s WILL REQUIRE SPECIFIC ENGINEERING DESIGN ASSESSMENT. THIS IS TO CONFIRM WHETHER THE ANTENNA TYPE WITH RECOMMENDED HEIGHT, SECTION SIZE AND PLINTH DIMENSIONS WILL STILL BE SUITABLE FOR THE SITE. OTHERWISE, AN ALTERNATIVE POLE HEIGHT AND SECTION SIZE SHOULD BE CONSIDERED AND SPECIFIED AS REQUIRED.
- MINIMUM DISTANCE BETWEEN THE TWO BRACKETS SHALL BE 1m.
- CABLE GLAND SHALL BE SIZED TO SUIT CABLE SIZE.
- REDUCER SIZE IS DEPENDENT ON CABLE GLAND SIZE.

\* WSL DRAWINGS 2014139.001 – 013 ARE TO BE READ IN CONJUNCTION. CONTRACTOR TO CONFIRM WIND SPEED, SITE CONDITIONS, AND SUBSTRATE MATERIALS (GROUND AND WALL/CABINET) ARE ADEQUATE FOR THE ANTENNA DETAILS PROVIDED. ALL ANTENNA INSTALLATIONS MUST COMPLY WITH THE NOTES AND REQUIREMENTS OUTLINED ON THE RELEVANT DRAWINGS. CONTRACTOR TO NOTIFY NECESSARY PARTIES IF SITE DOES NOT COMPLY WITH THE REQUIREMENTS OR IF SITE CONDITIONS REQUIRE A SPECIFIC ENGINEERING DESIGN OUTSIDE THE SCOPE OF WHAT IS PROVIDED.

FOR CONSTRUCTION\*



E	10-24	ISSUED FOR CONSTRUCTION – REVISED	WSL	WSL	DESIGNED	WATERCARE	09-23
D	08-24	ISSUED FOR CONSTRUCTION – REVISED	WSL	WSL	DES. APPROVED	WATERCARE	09-23
C	06-24	ISSUED FOR CONSTRUCTION – REVISED	WSL	WSL	DRAWN	A. SEPNO	09-23
B	02-24	ISSUED FOR CONSTRUCTION – WITH ACH REVIEW COMMENTS	WSL	WSL	DWG. APPROVED	D. IBRAHIM	09-23
A	09-23	ISSUED FOR REVIEW	–	–	WSL DESIGN MGMT.		
–	02-23	ISSUED FOR CONSTRUCTION	–	–	WSL PROJ. LEAD		
ISSUE	DATE	AMENDMENT	BY	APPD.		BY	DATE

**Watercare**

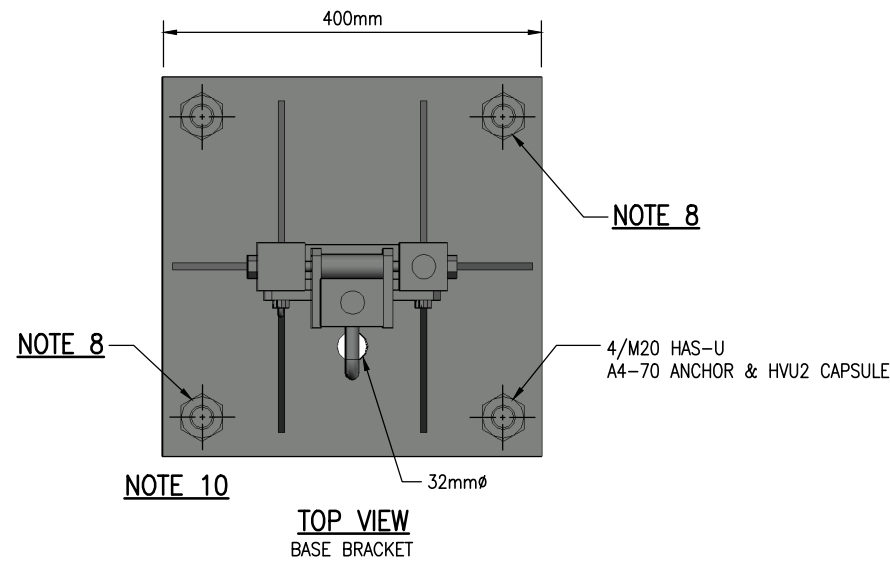
COPYRIGHT – This drawing, the design concept, remain the exclusive property of Watercare Services Limited and may not be used without approval. Copyright reserved.

WATERCARE SERVICES LIMITED  
STANDARD DRAWING

ANTENNA POLE SELECTION FOUR – FOLDING ANTENNA BRACKET CHANNEL

CAD FILE	2014139.004E	DATE	18-10-24
ORIGINAL SCALE	A3 NTS	CONTRACT No.	–
REF No.	–		
DWG No.	2014139.004	ISSUE	E



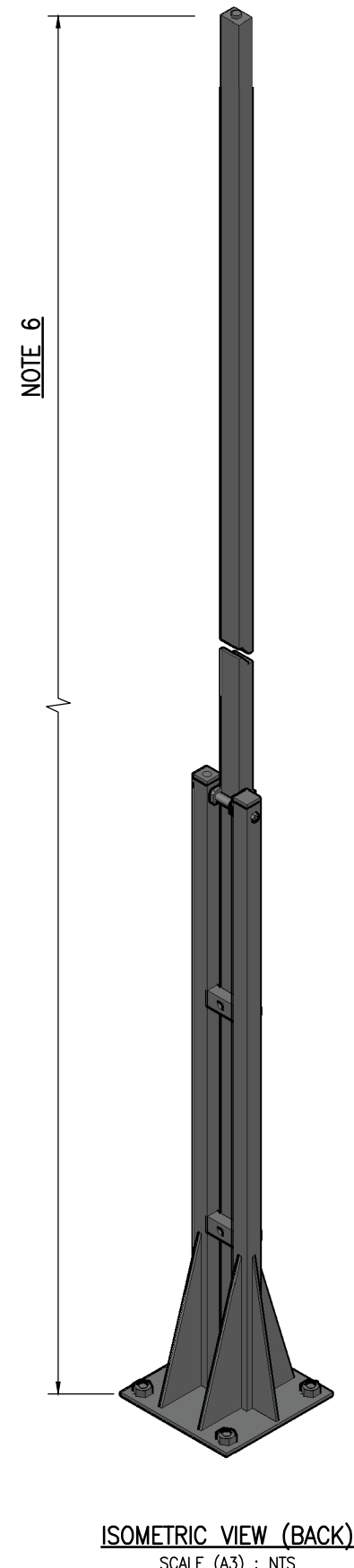
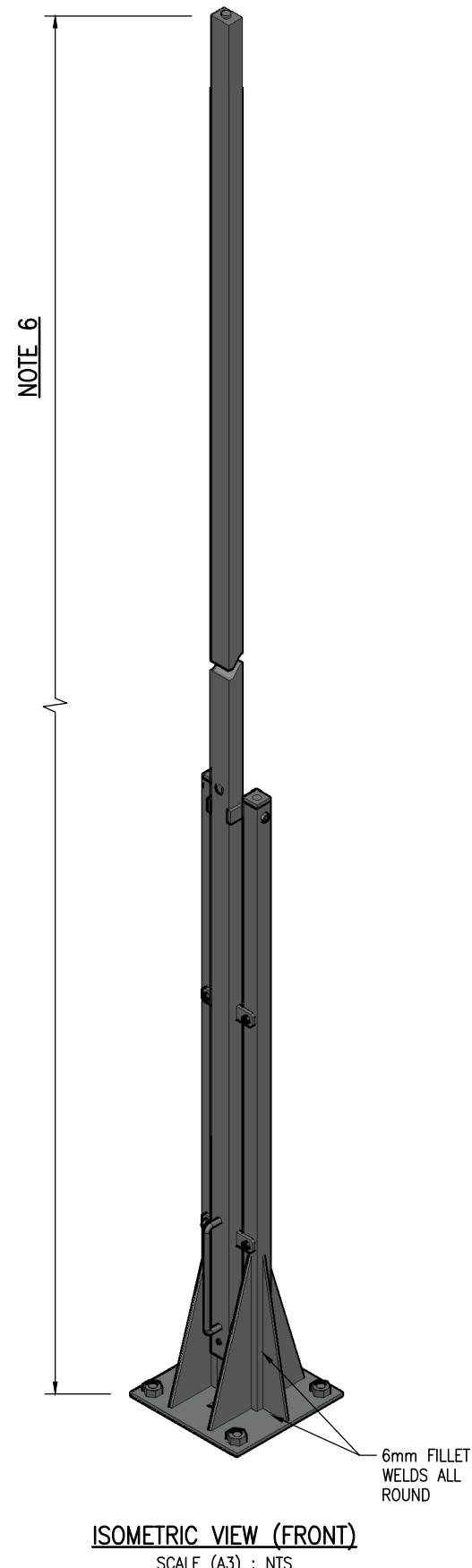
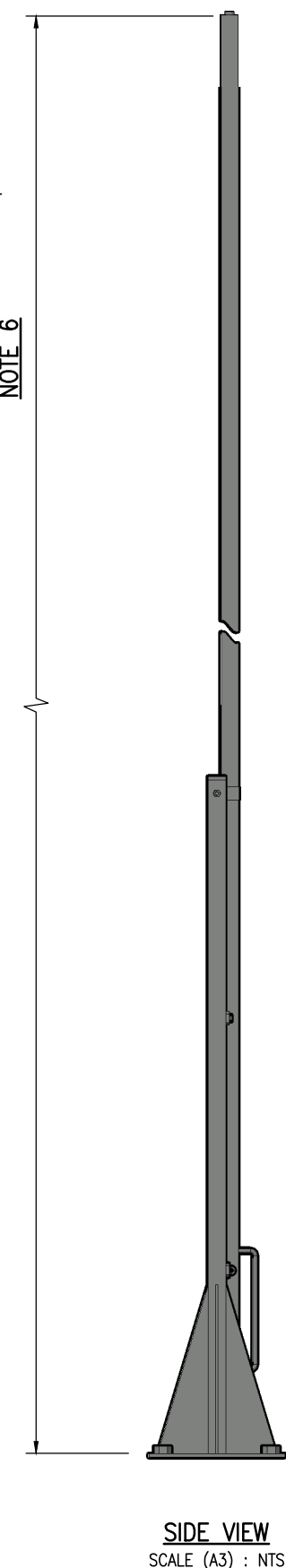
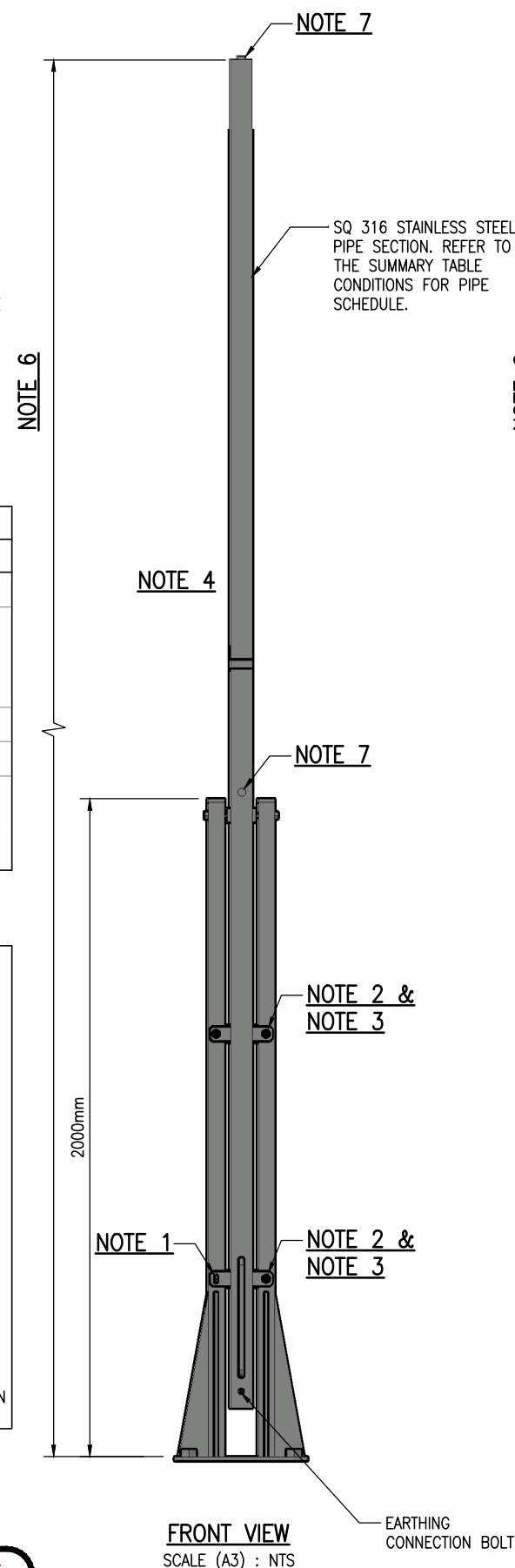


SUMMARY TABLE CONDITION			
WIND ZONE	MAX HEIGHT	SECTION SIZE	ANTENNA TYPE
VERY HIGH	7.5m	75x5 SHS	RFI YH03
VERY HIGH	8.0m	75x5 SHS	LTE - GO WIRELESS ANT-252, RFI CD29, RFI CD50-68-70, RFI CD93-71-70, RFI YBSS6-61, RFI YB6-61, LTE - GO WIRELESS ANT-288
EXT. HIGH	8.0m	100x5 SHS	RFI YH03
EXT. HIGH	6.5m	75x5 SHS	RFI YH03
EXT. HIGH	7.5m	75x5 SHS	LTE - GO WIRELESS ANT-252, RFI CD29, RFI CD50-68-70, RFI CD93-71-70, RFI YBSS6-61, RFI YB6-61, LTE - GO WIRELESS ANT-288

- NOTES:**
- PADLOCK LATCH.
  - M12 A4-70 BOLTS.
  - 12mm STUDS FOR MOUNTING.
  - ANTENNA POLE SHALL BE 316 STAINLESS STEEL PIPE OR CHANNEL. THIS IS ANTENNA POLE HEIGHT DEPENDENT AND SCHEDULE TYPE AS PER SUMMARY TABLE CONDITIONS.
  - POLE CAN BE PLACED NEAR CABINET.
  - A PIPE SHALL BE USED FOR UPTO MAXIMUM HEIGHT OF 6m AND A CHANNEL SHALL BE USED FOR HEIGHTS OF 6m TO 8m.
  - CABLE GLAND SHALL BE SIZED TO SUIT CABLE SIZE.
  - Ø22mm TO FIT CAGE.
  - POLE AND BRACKET SIZES DETAILED WITHIN THE DRAWING AS A MINIMUM BASED ON SUMMARY TABLE CONDITION. DEVIATION FROM THE SUMMARY TABLE CONDITIONS WILL REQUIRE AN ASSESSMENT OF POLE AND BRACKET SIZES.
  - EXTENSIVE FOUNDATION SHALL BE PLACED FOR THIS STAINLESS STEEL CAGE (I.E. SHALL BE SET INTO THE FOUNDATION). REFER TO 2014139.008/.009/.010 FOR TYPE 5 FIXING DETAILS (PILE DETAIL, SLAB DETAIL AND SLAB SELECTION RESPECTIVELY) AND FOUNDATION DETAILS.
  - IT IS ESSENTIAL TO CHECK THE SITE SPECIFIC WIND ZONE PRIOR TO SELECTING THE POLE HEIGHT, SECTION SIZE AND PLINTH DIMENSIONS. THE SUMMARY TABLE IS APPLICABLE AND ONLY DESIGNED FOR WIND ZONES UP TO EXTREME-HIGH WIND CONDITIONS RANGING 50-55 m/s. LOCATIONS WITH WIND SPEED GREATER THAN 55 m/s WILL REQUIRE SPECIFIC ENGINEERING DESIGN ASSESSMENT. THIS IS TO CONFIRM WHETHER THE ANTENNA TYPE WITH RECOMMENDED HEIGHT, SECTION SIZE AND PLINTH DIMENSIONS WILL STILL BE SUITABLE FOR THE SITE. OTHERWISE, AN ALTERNATIVE POLE HEIGHT, SECTION SIZE AND PLINTH DIMENSIONS SHOULD BE CONSIDERED AND SPECIFIED AS REQUIRED.

\* WSL DRAWINGS 2014139.001 - 013 ARE TO BE READ IN CONJUNCTION. CONTRACTOR TO CONFIRM WIND SPEED, SITE CONDITIONS, AND SUBSTRATE MATERIALS (GROUND AND WALL/CABINET) ARE ADEQUATE FOR THE ANTENNA DETAILS PROVIDED. ALL ANTENNA INSTALLATIONS MUST COMPLY WITH THE NOTES AND REQUIREMENTS OUTLINED ON THE RELEVANT DRAWINGS. CONTRACTOR TO NOTIFY NECESSARY PARTIES IF SITE DOES NOT COMPLY WITH THE REQUIREMENTS OR IF SITE CONDITIONS REQUIRE A SPECIFIC ENGINEERING DESIGN OUTSIDE THE SCOPE OF WHAT IS PROVIDED.

**FOR CONSTRUCTION\***



E	10-24	ISSUED FOR CONSTRUCTION - REVISED	WSL	WSL	DESIGNED	WATERCARE	09-23
D	08-24	ISSUED FOR CONSTRUCTION - REVISED	WSL	WSL	DES. APPROVED	WATERCARE	09-23
C	06-24	ISSUED FOR CONSTRUCTION - REVISED	WSL	WSL	DRAWN	A. SEPNO	09-23
B	02-24	ISSUED FOR CONSTRUCTION - WITH ACH REVIEW COMMENTS	WSL	WSL	DWG. APPROVED	D. IBRAHIM	09-23
A	09-23	ISSUED FOR REVIEW	-	-	WSL DESIGN MGMT.		
-	02-23	ISSUED FOR CONSTRUCTION	-	-	WSL PROJ. LEAD		
ISSUE	DATE	AMENDMENT	BY	APPD.	BY	DATE	

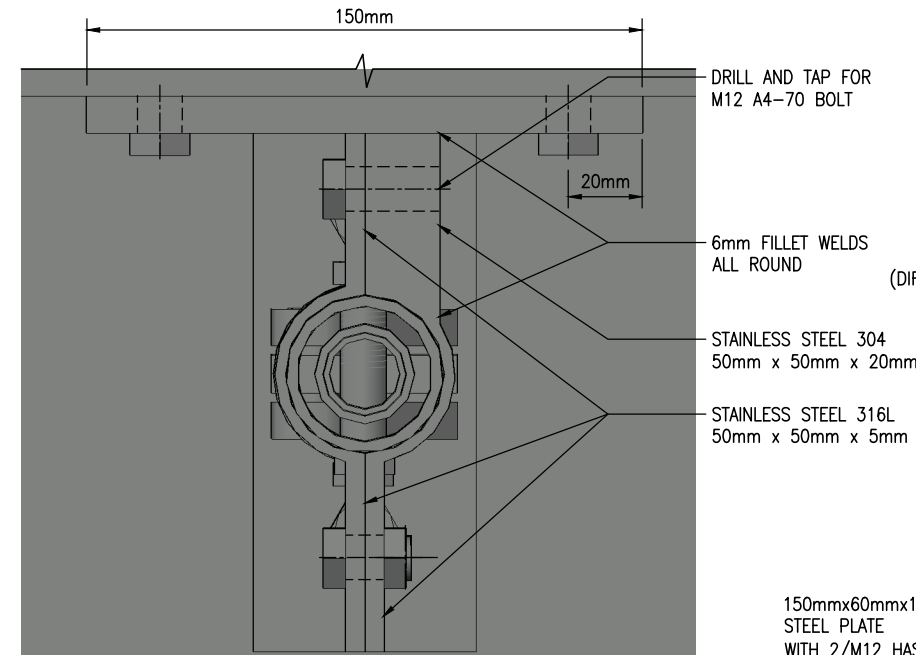


**WATERCARE SERVICES LIMITED**

**STANDARD DRAWING**

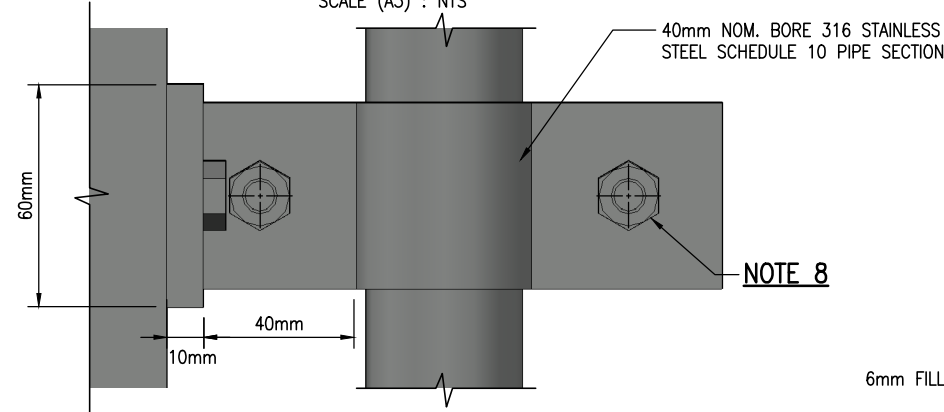
ANTENNA POLE SELECTION FIVE - ANTENNA FOLDING PANEL

CAD FILE	2014139.005E	DATE	18-10-24
ORIGINAL SCALE	A3	CONTRACT No.	-
REF No.	-		
DWG No.	2014139.005	ISSUE	E



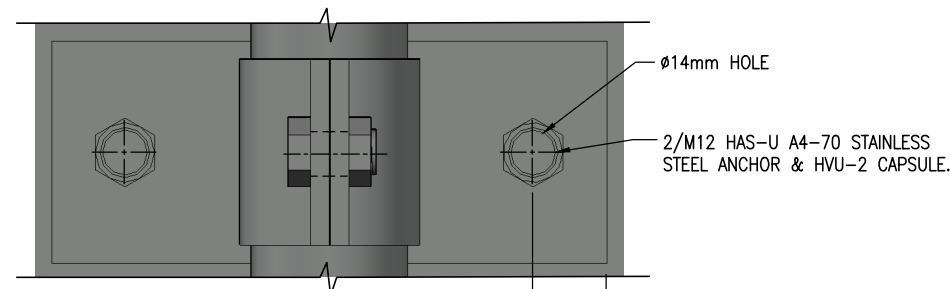
**TOP VIEW**

ANTENNA POLE TO CABINET MOUNTING BRACKET  
SCALE (A3) : NTS



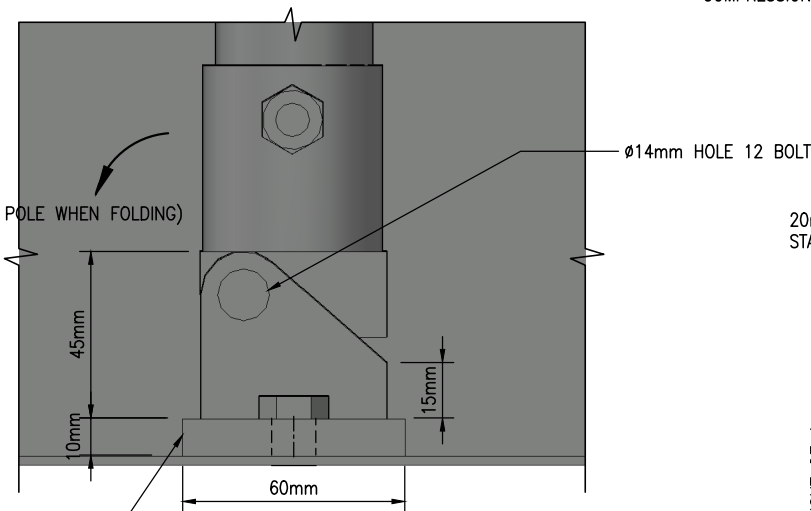
**OPTION B SIDE VIEW**

ANTENNA POLE TO CABINET MOUNTING BRACKET  
SCALE (A3) : NTS



**OPTION B FRONT VIEW**

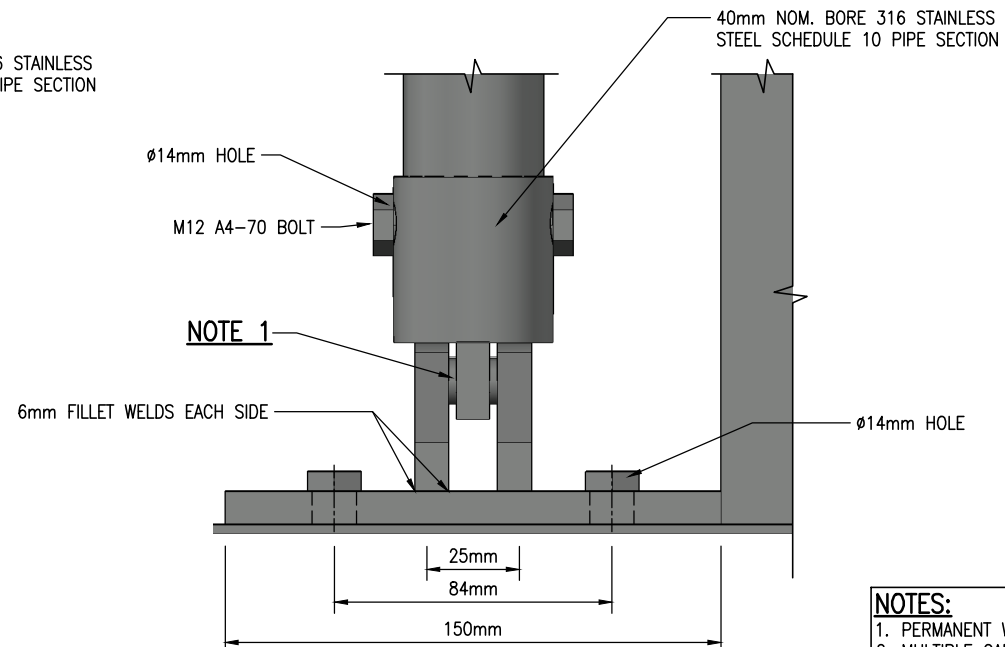
ANTENNA POLE TO CABINET MOUNTING BRACKET  
SCALE (A3) : NTS



**FRONT VIEW**

ANTENNA POLE FOLDING BOTTOM HINGE  
SCALE (A3) : NTS

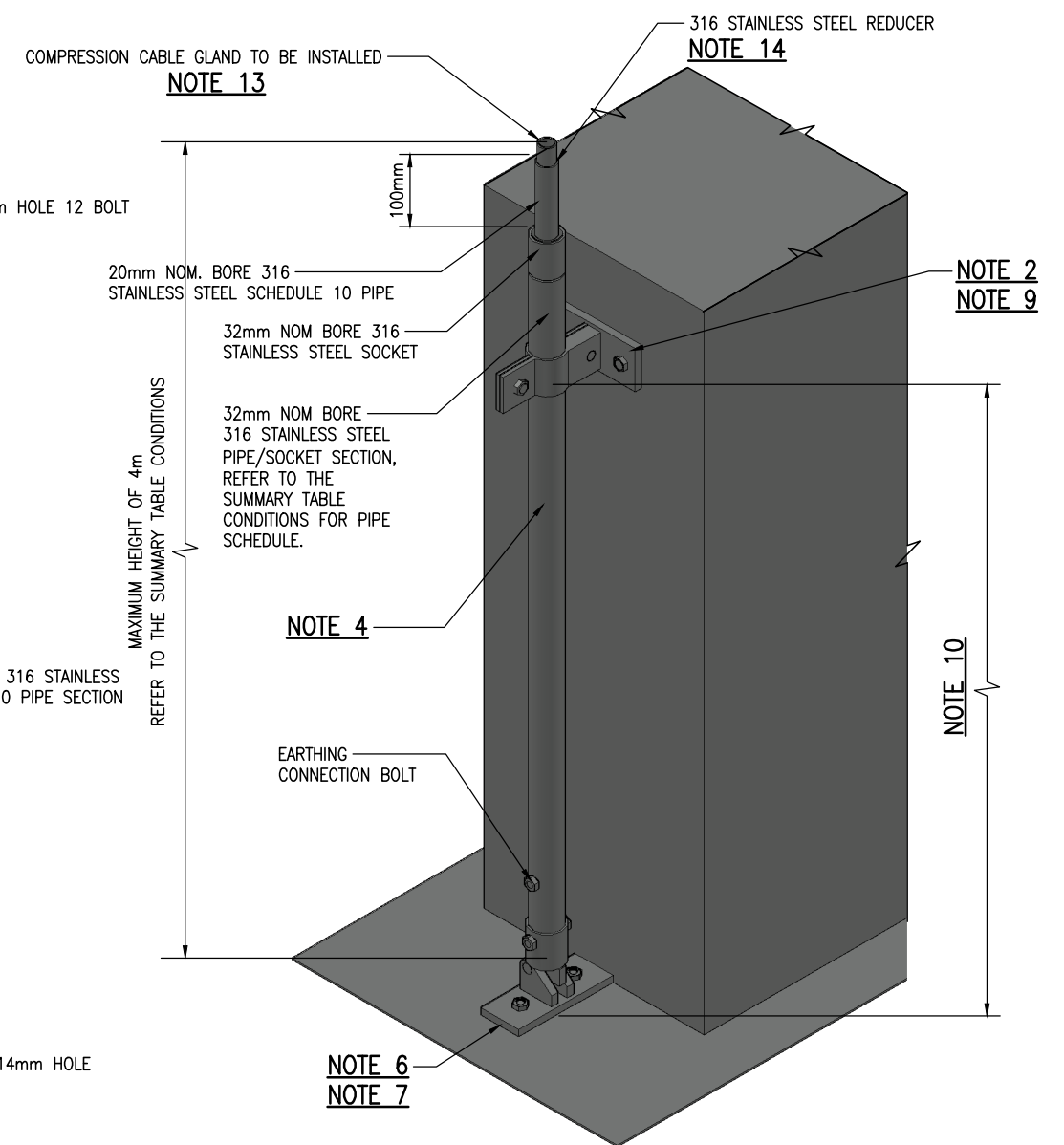
150mmx60mmx10mm 316 STAINLESS STEEL PLATE WITH 2/M12 HAS-U A4-70 STAINLESS STEEL ANCHOR & HVU-2 CAPSULE.



**SIDE VIEW**

ANTENNA POLE FOLDING BOTTOM HINGE  
SCALE (A3) : NTS

150mmx60mmx10mm 316 STAINLESS STEEL PLATE WITH 2/M12 HAS-U A4-70 STAINLESS STEEL ANCHOR & HVU-2 CAPSULE.



**ISOMETRIC VIEW**

SCALE (A3) : NTS

**NOTES:**

- PERMANENT WELDED PIN FOR ANTENNA FOLDING ACTION. PIN SHALL BE WELDED TO BASE AS SHOWN.
- MULTIPLE CABINET MOUNTING BRACKETS CAN BE ADDED FOR SUPPORT AS NECESSARY DEPENDENT ON STRUCTURE IT IS BEING MOUNTED TO.
- ANTENNA POLE CAN BE PLACED AGAINST CABINET AS SHOWN OR AGAINST ANOTHER SUPPORT STRUCTURE OF SUITABLE STRENGTH.
- ANTENNA POLE SHALL BE 316 STAINLESS STEEL PIPE AND SCHEDULE TYPE AS PER SUMMARY TABLE CONDITIONS.
- POLE AND BRACKET SIZES DETAILED WITHIN THE DRAWING AS A MINIMUM BASED ON SUMMARY TABLE CONDITION. DEVIATION FROM THE SUMMARY TABLE CONDITIONS WILL REQUIRE AN ASSESSMENT OF POLE AND BRACKET SIZES.
- ANTENNA POLE FOLDING BOTTOM CAN BE ORIENTED AS SHOWN OR ROTATED 180° (DIRECTION OF POLE FOLDING WILL ALSO ROTATE 180°) IF OPTION B BRACKET IS USED.
- ANTENNA POLE FOLDING BOTTOM CAN BE ROTATED 90° CLOCKWISE IF OPTION A BRACKET IS USED AS SHOWN IN DRAWING 2014139.002.
- REMOVABLE BOLTS M12 A4-70.
- REFER TO 2014139.011 FOR TYPE 2 FIXING AND STAND OFF DETAILS TO ACCOUNT FOR EAVES.
- MOUNT TOP FIXING AS HIGH ON STRUCTURE AS POSSIBLE. MINIMUM OF 1m FOR MAXIMUM HEIGHT 4m.
- FOR THIN CABINET WALLS, EXTRA FIXING IS REQUIRED TO INCREASE STRENGTH AND DISTRIBUTE FORCE OVER A GREATER AREA. THIS IS TO ENSURE THE WALL IS NOT SUSCEPTIBLE TO FAILURE UNDER THE WIND LOAD CONDITIONS.
- IT IS ESSENTIAL TO CHECK THE SITE SPECIFIC WIND ZONE PRIOR TO SELECTING THE POLE HEIGHT, SECTION SIZE AND PLINTH. THE SUMMARY TABLE IS APPLICABLE AND ONLY DESIGNED FOR WIND ZONES UP TO EXTREME-HIGH WIND CONDITIONS RANGING 50-55 m/s. LOCATIONS WITH WIND SPEED GREATER THAN 55 m/s WILL REQUIRE SPECIFIC ENGINEERING DESIGN ASSESSMENT. THIS IS TO CONFIRM WHETHER THE ANTENNA TYPE WITH RECOMMENDED HEIGHT, SECTION SIZE AND PLINTH DIMENSIONS WILL STILL BE SUITABLE FOR THE SITE. OTHERWISE, ALTERNATIVE POLE HEIGHT, SECTION SIZE AND PLINTH DIMENSIONS SHOULD BE CONSIDERED AND SPECIFIED AS REQUIRED.
- CABLE GLAND SHALL BE SIZED TO SUIT CABLE SIZE.
- REDUCER SIZE IS DEPENDENT ON CABLE GLAND SIZE.

\* WSL DRAWINGS 2014139.001 - 013 ARE TO BE READ IN CONJUNCTION. CONTRACTOR TO CONFIRM WIND SPEED, SITE CONDITIONS, AND SUBSTRATE MATERIALS (GROUND AND WALL/CABINET) ARE ADEQUATE FOR THE ANTENNA DETAILS PROVIDED. ALL ANTENNA INSTALLATIONS MUST COMPLY WITH THE NOTES AND REQUIREMENTS OUTLINED ON THE RELEVANT DRAWINGS. CONTRACTOR TO NOTIFY NECESSARY PARTIES IF SITE DOES NOT COMPLY WITH THE REQUIREMENTS OR IF SITE CONDITIONS REQUIRE A SPECIFIC ENGINEERING DESIGN OUTSIDE THE SCOPE OF WHAT IS PROVIDED.

**FOR CONSTRUCTION\***

SUMMARY TABLE CONDITIONS			
WIND ZONE	MAX HEIGHT	SECTION SIZE	ANTENNA TYPE
EXT. HIGH	3.5m	32mm NOM BORE SCHEDULE 80	RFI YH03
EXT. HIGH	4.0m	32mm NOM BORE SCHEDULE 80	LTE - GO WIRELESS ANT-252
EXT. HIGH	4.0m	32mm NOM BORE SCHEDULE 10	RFI CD29, RFI CD50-68-70, RFI CD93-71-70, RFI YBSS6-61, RFI YB6-61, LTE - GO WIRELESS ANT-288

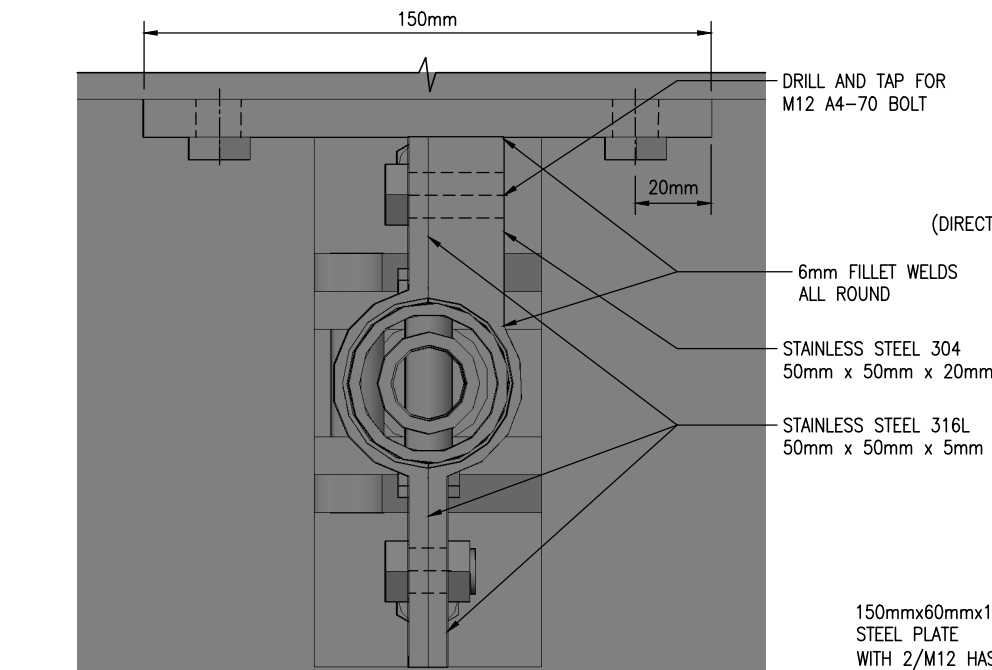
ISSUE	DATE	AMENDMENT	BY	APPD.	DESIGNED	WATERCARE	DATE
C	10-24	ISSUED FOR CONSTRUCTION - REVISED	WSL	WSL	DRAWN	A. SEPINO	02-24
B	08-24	ISSUED FOR CONSTRUCTION - REVISED	WSL	WSL	DWG. APPROVED	D. IBRAHIM	02-24
A	06-24	ISSUED FOR CONSTRUCTION - REVISED	WSL	WSL	WSL DESIGN MGMT.		
-	02-24	ISSUED FOR CONSTRUCTION - WITH ACH REVIEW COMMENTS	WSL	WSL	WSL PROJ. LEAD		



**WATERCARE SERVICES LIMITED**  
**STANDARD DRAWING**

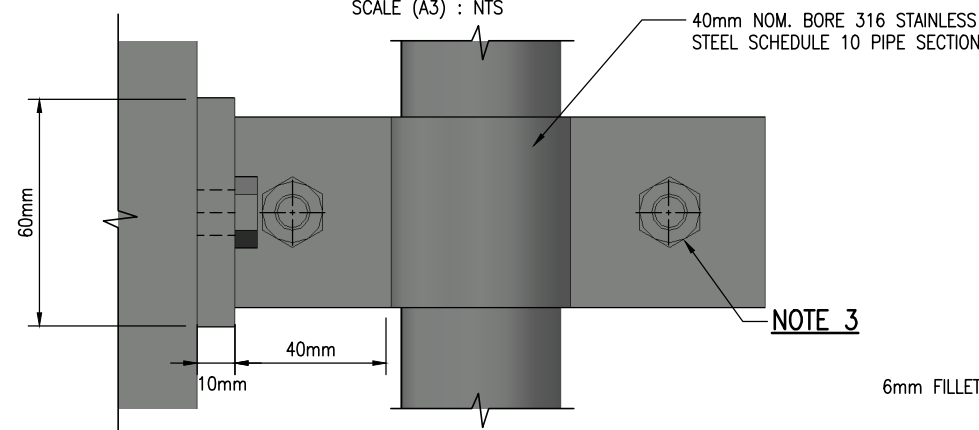
ANTENNA POLE SELECTION SIX - BSP FOLDING ANTENNA BRACKET

CAD FILE	2014139.006C	DATE	18-10-24
ORIGINAL SCALE	A3	CONTRACT No.	-
REF No.	-		
DWG No.	2014139.006	ISSUE	C



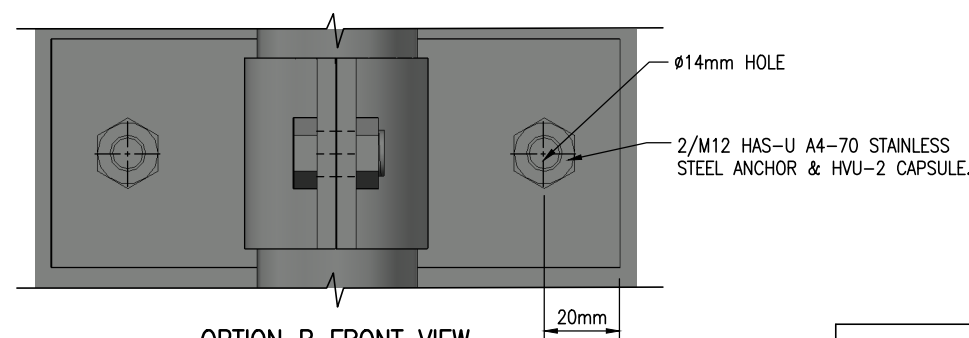
**TOP VIEW**

ANTENNA POLE TO CABINET MOUNTING BRACKET  
SCALE (A3) : NTS



**OPTION B SIDE VIEW**

ANTENNA POLE TO CABINET MOUNTING BRACKET  
SCALE (A3) : NTS

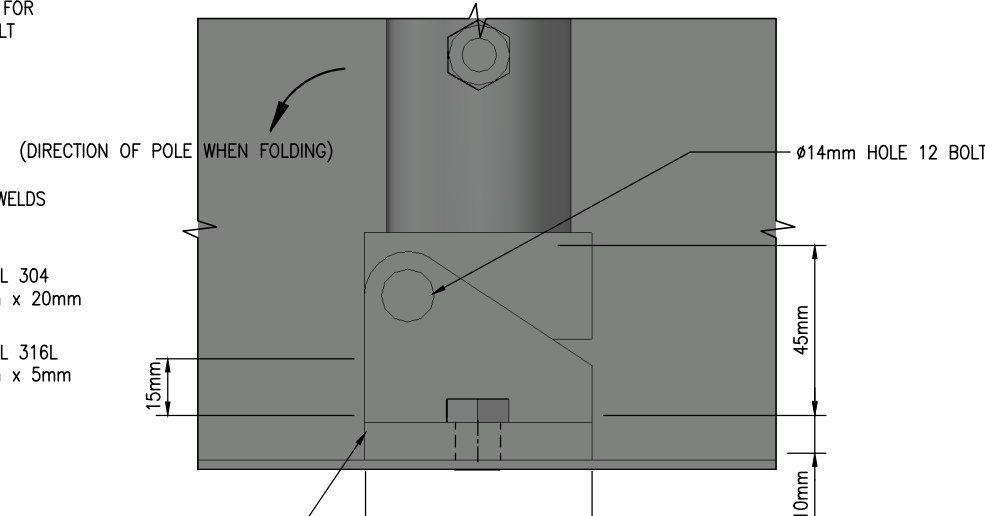


**OPTION B FRONT VIEW**

ANTENNA POLE TO CABINET MOUNTING BRACKET  
SCALE (A3) : NTS

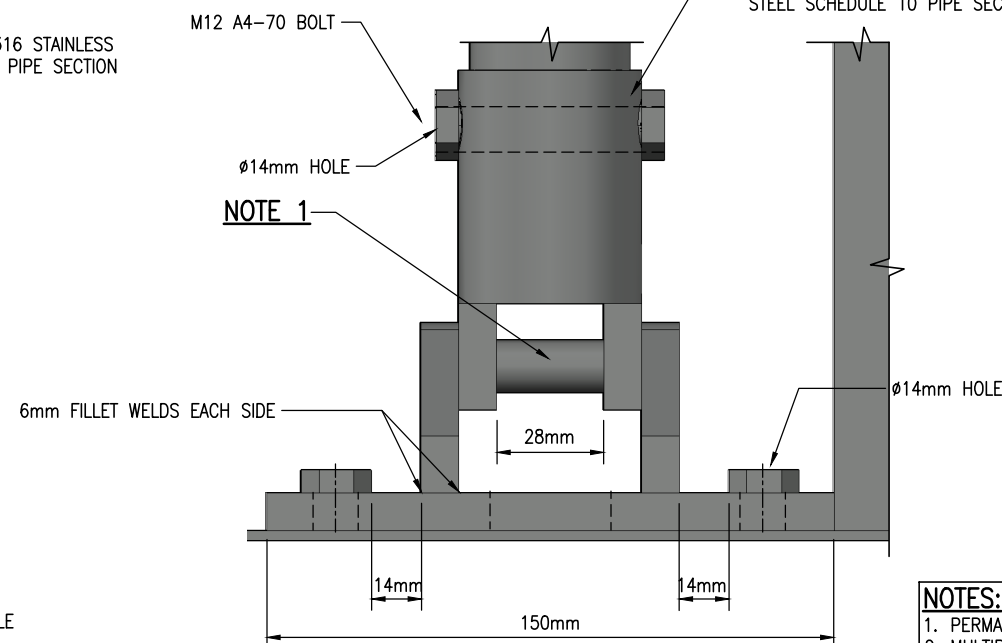
\* WSL DRAWINGS 2014139.001 - 013 ARE TO BE READ IN CONJUNCTION. CONTRACTOR TO CONFIRM WIND SPEED, SITE CONDITIONS, AND SUBSTRATE MATERIALS (GROUND AND WALL/CABINET) ARE ADEQUATE FOR THE ANTENNA DETAILS PROVIDED. ALL ANTENNA INSTALLATIONS MUST COMPLY WITH THE NOTES AND REQUIREMENTS OUTLINED ON THE RELEVANT DRAWINGS. CONTRACTOR TO NOTIFY NECESSARY PARTIES IF SITE DOES NOT COMPLY WITH THE REQUIREMENTS OR IF SITE CONDITIONS REQUIRE A SPECIFIC ENGINEERING DESIGN OUTSIDE THE SCOPE OF WHAT IS PROVIDED.

**FOR CONSTRUCTION\***



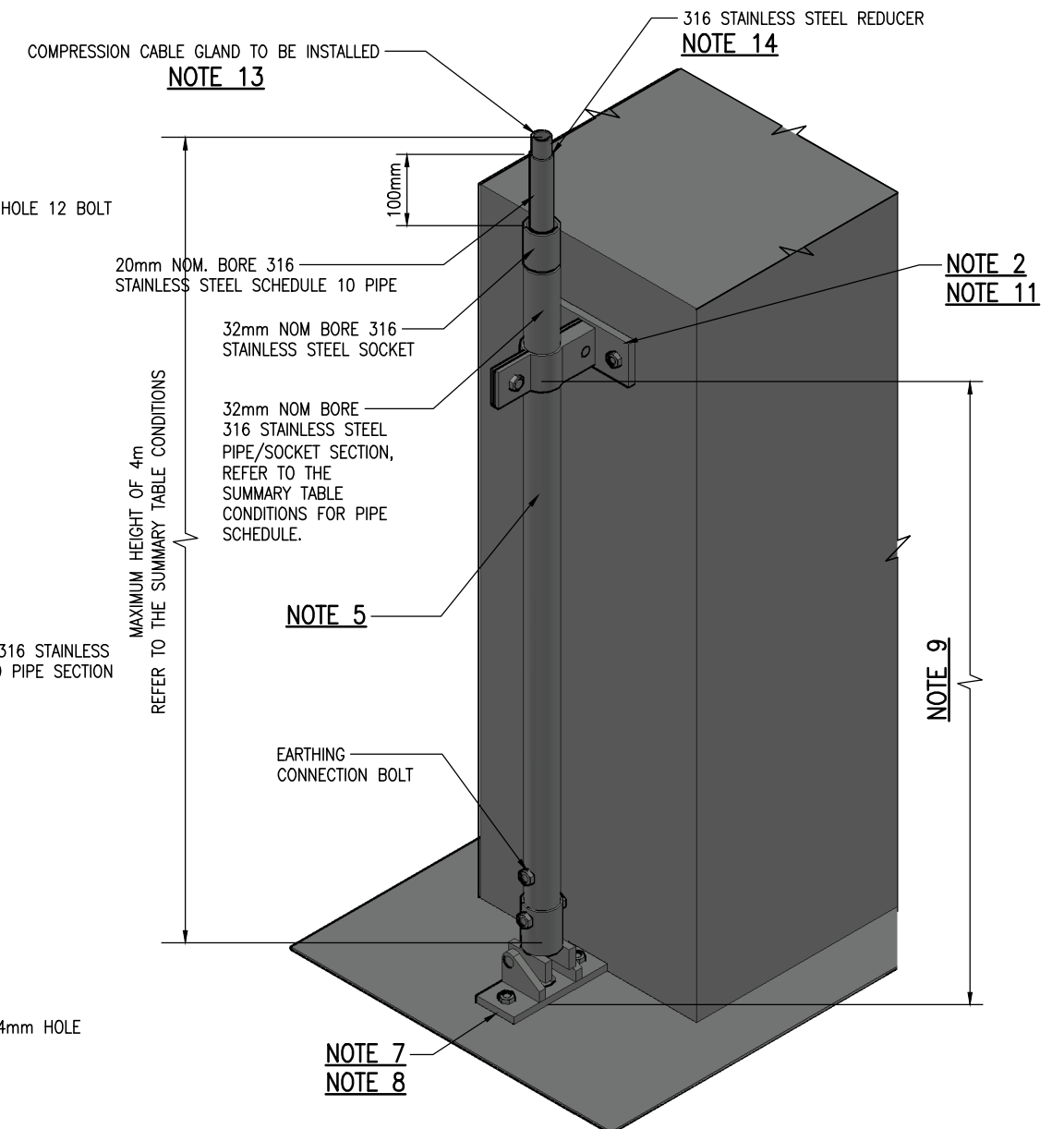
**FRONT VIEW**

ANTENNA POLE FOLDING BOTTOM HINGE  
SCALE (A3) : NTS



**SIDE VIEW**

ANTENNA POLE FOLDING BOTTOM HINGE  
SCALE (A3) : NTS



**ISOMETRIC VIEW**

SCALE (A3) : NTS

**NOTES:**

- PERMANENT WELDED PIN FOR ANTENNA FOLDING ACTION. PIN SHALL BE WELDED TO BASE AS SHOWN.
- MULTIPLE CABINET MOUNTING BRACKETS CAN BE ADDED FOR SUPPORT AS NECESSARY DEPENDENT ON STRUCTURE IT IS BEING MOUNTED TO.
- REMOVABLE BOLTS M12 A4-70.
- ANTENNA POLE CAN BE PLACED AGAINST CABINET AS SHOWN OR AGAINST ANOTHER SUPPORT STRUCTURE OF SUITABLE STRENGTH.
- ANTENNA POLE SHALL BE 316 STAINLESS STEEL PIPE AND SCHEDULE TYPE AS PER SUMMARY TABLE CONDITIONS.
- POLE AND BRACKET SIZES DETAILED WITHIN THE DRAWING AS A MINIMUM BASED ON SUMMARY TABLE CONDITION. DEVIATION FROM THE SUMMARY TABLE CONDITIONS WILL REQUIRE AN ASSESSMENT OF POLE AND BRACKET SIZES.
- ANTENNA POLE FOLDING BOTTOM CAN BE ORIENTED AS SHOWN OR ROTATED 180° (DIRECTION OF POLE FOLDING WILL ALSO ROTATE 180°) IF OPTION B BRACKET IS USED.
- ANTENNA POLE FOLDING BOTTOM CAN BE ROTATED 90° ANTI-CLOCKWISE IF OPTION A BRACKET IS USED AS SHOWN IN DRAWING 2014139.003.
- MOUNT TOP FIXING AS HIGH ON STRUCTURE AS POSSIBLE. MINIMUM OF 1m FOR MAXIMUM HEIGHT 4m.
- REFER TO 2012139.011 FOR TYPE 3 FIXING DETAILS AND STAND OFF DETAIL TO ACCOUNT FOR EAVES.
- FOR THIN CABINET WALLS, EXTRA FIXING IS REQUIRED TO INCREASE STRENGTH AND DISTRIBUTE FORCE OVER A GREATER AREA. THIS IS TO ENSURE THE WALL IS NOT SUSCEPTIBLE TO FAILURE UNDER THE WIND LOAD CONDITIONS.
- IT IS ESSENTIAL TO CHECK THE SITE SPECIFIC WIND ZONE PRIOR TO SELECTING THE POLE HEIGHT, SECTION SIZE AND PLINTH. THE SUMMARY TABLE IS APPLICABLE AND ONLY DESIGNED FOR WIND ZONES UP TO EXTREME HIGH WIND CONDITIONS RANGING 50-55 m/s. LOCATIONS WITH WIND SPEED GREATER THAN 55 m/s WILL REQUIRE SPECIFIC ENGINEERING DESIGN ASSESSMENT. THIS IS TO CONFIRM WHETHER THE ANTENNA TYPE WITH RECOMMENDED HEIGHT, SECTION SIZE AND PLINTH DIMENSIONS WILL STILL BE SUITABLE FOR THE SITE. OTHERWISE, ALTERNATIVE POLE HEIGHT, SECTION SIZE AND PLINTH DIMENSIONS SHOULD BE CONSIDERED AND SPECIFIED AS REQUIRED.
- CABLE GLAND SHALL BE SIZED TO SUIT CABLE SIZE.
- REDUCER SIZE IS DEPENDENT ON CABLE GLAND SIZE.

SUMMARY TABLE CONDITIONS			
WIND ZONE	MAX HEIGHT	SECTION SIZE	ANTENNA TYPE
EXT. HIGH	3.5m	32mm NOM BORE SCHEDULE 80	RFI YH03
EXT. HIGH	4.0m	32mm NOM BORE SCHEDULE 80	LTE - GO WIRELESS ANT-252
EXT. HIGH	4.0m	32mm NOM BORE SCHEDULE 10	RFI CD29, RFI CD50-68-70, RFI CD93-71-70, RFI YBSS6-61, RFI YB6-61, LTE - GO WIRELESS ANT-288

ISSUE	DATE	AMENDMENT	BY	APPD.	DESIGNED	WATERCARE	DATE
C	10-24	ISSUED FOR CONSTRUCTION - REVISED	WSL	WSL	DES. APPROVED	WATERCARE	09-24
B	08-24	ISSUED FOR CONSTRUCTION - REVISED	WSL	WSL	DRAWN	A. SEPNO	09-24
A	06-24	ISSUED FOR CONSTRUCTION - REVISED	WSL	WSL	DWG. APPROVED	D. IBRAHIM	09-24
-	02-24	ISSUED FOR CONSTRUCTION - WITH ACH REVIEW COMMENTS	WSL	WSL	WSL DESIGN MGMT.		
					WSL PROJ. LEAD		



**WATERCARE SERVICES LIMITED**  
**STANDARD DRAWING**

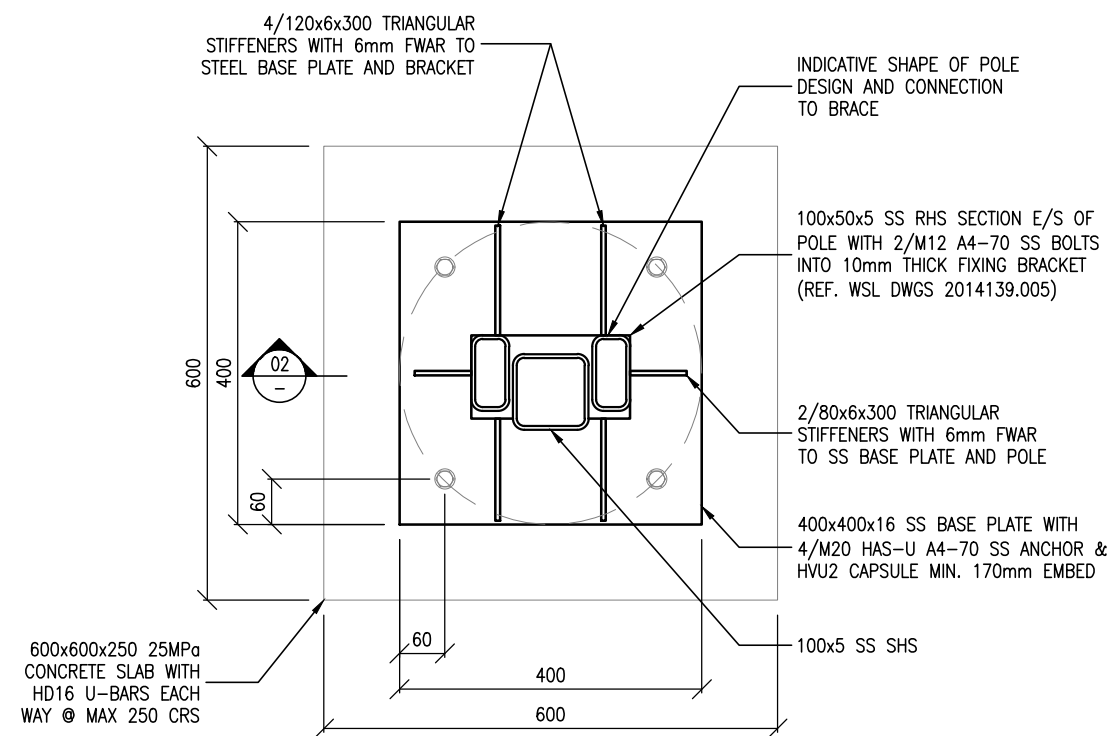
ANTENNA POLE SELECTION SEVEN - DOUBLE BOTTOM BRACKET FOLDING ANTENNA

CAD FILE	2014139.007C	DATE	18-10-24
ORIGINAL SCALE	A3 NTS	CONTRACT No.	-
REF No.	-		
DWG No.	2014139.007	ISSUE	C

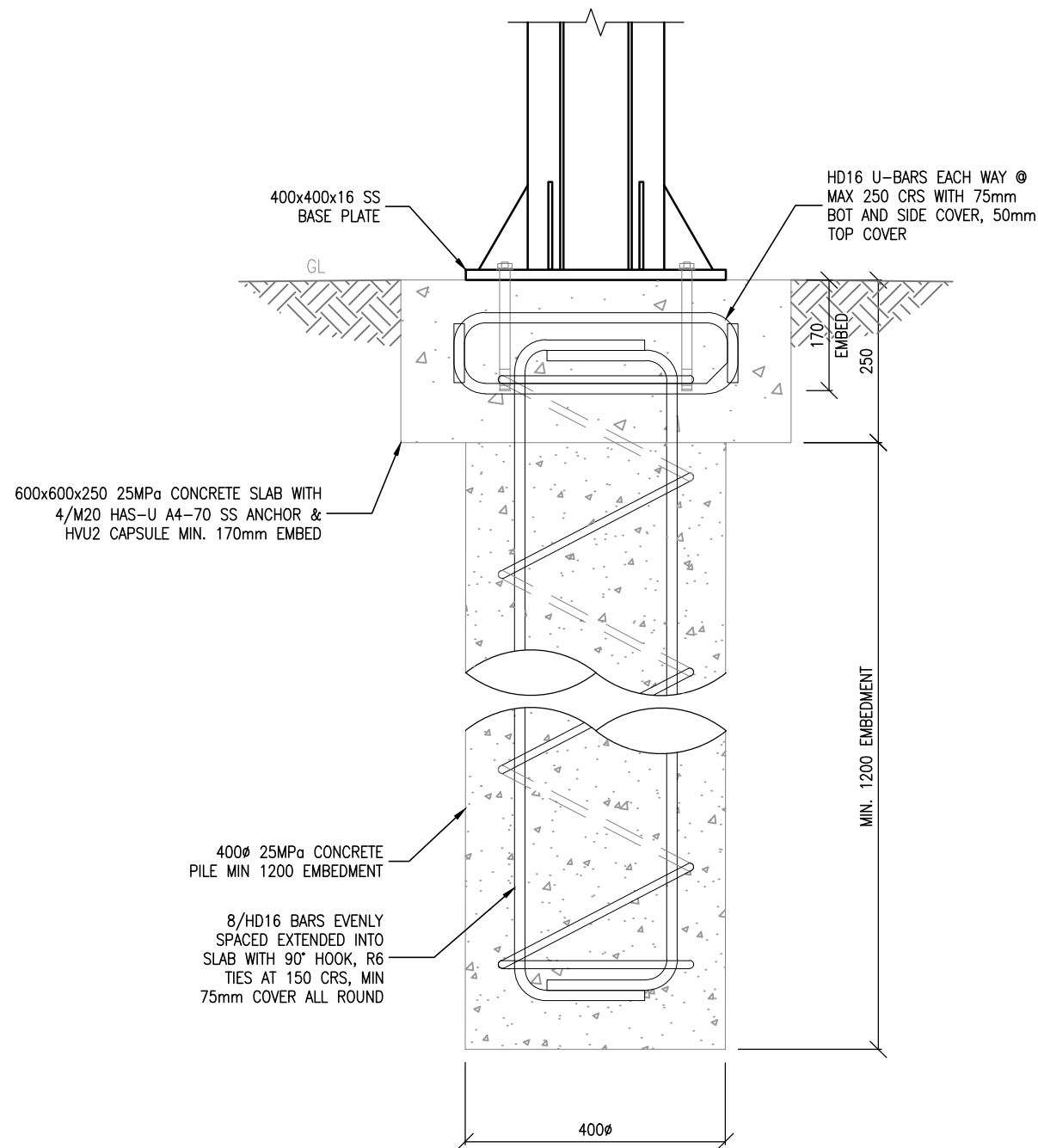


1. FOOTING REQ NOT SHOWN FOR CLARITY.
2. ALL CONCRETE TO BE 25MPa.
3. BASE PLATE AND ANTENNA TO BE STAINLESS STEEL 316.
4. FIXING DETAILS TO BE READ IN CONJUNCTION WITH WSL DRAWING 2014139.005
5. ASSUMED SOIL STRENGTH OF 100kPa.
6. ALL WELDS TO BE 6mm STAINLESS STEEL 316L FILLET WELDS.
7. ALL DIMENSIONS ARE IN mm UNLESS OTHERWISE NOTED.

\* WSL DRAWINGS 2014139.001 — 013 ARE TO BE READ IN CONJUNCTION. CONTRACTOR TO CONFIRM WIND SPEED, SITE CONDITIONS, AND SUBSTRATE MATERIALS (GROUND AND WALL/CABINET) ARE ADEQUATE FOR THE ANTENNA DETAILS PROVIDED. ALL ANTENNA INSTALLATIONS MUST COMPLY WITH THE NOTES AND REQUIREMENTS OUTLINED ON THE RELEVANT DRAWINGS. CONTRACTOR TO NOTIFY NECESSARY PARTIES IF SITE DOES NOT COMPLY WITH THE REQUIREMENTS OR IF SITE CONDITIONS REQUIRE A SPECIFIC ENGINEERING DESIGN OUTSIDE THE SCOPE OF WHAT IS PROVIDED.




ANTENNA TYPE 5 PILE DETAIL (01)



SECTION 02  
NTS

CONSTRUCTION ISSUE \*

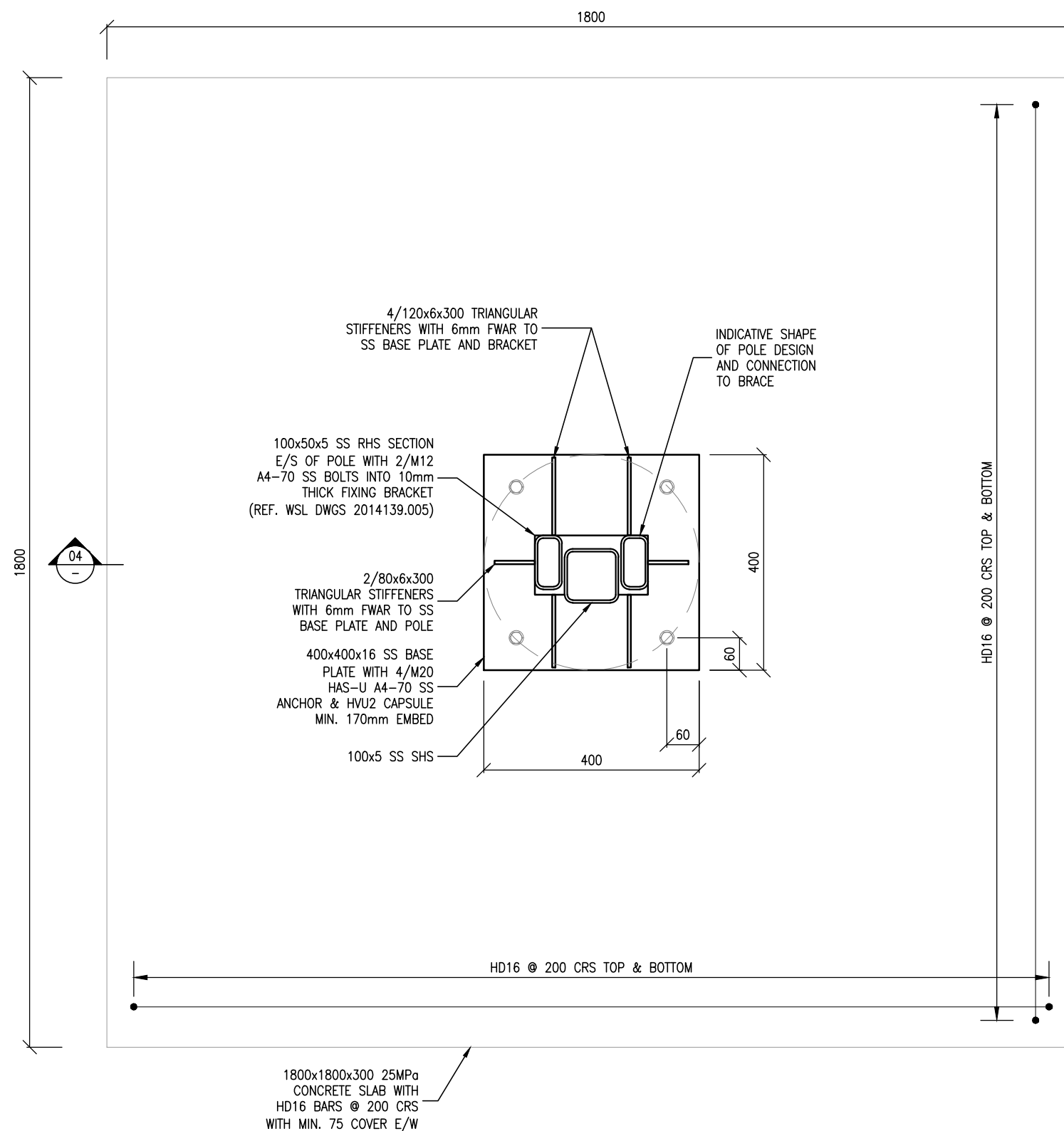
					DESIGNED	E. Pocklington	05-24	 <b>Watercare</b> COPYRIGHT - This drawing, the design concept, remain the exclusive property of Watercare Services Limited and may not be used without approval. Copyright reserved.
					DES. APPROVED	A. Gill	05-24	
					DRAWN	A. Vitoria	05-24	
B	10-24	FOR CONSTRUCTION - REVISED	AV	AG	DWG. APPROVED	A. Gill	05-24	
A	09-24	FOR CONSTRUCTION - REVISED	AV	AG	WSL DESIGN MGMT.			
-	05-24	FOR CONSTRUCTION	AV	AG	WSL PROJ. LEAD			
ISSUE	DATE	AMENDMENT	BY	APPD.		BY	DATE	

WATERCARE SERVICES LIMITED  
STANDARD DRAWING  
ANTENNA POLE FIXING DETAILS – TYPE 5 PILE DETAIL

CAD FILE	2014139 .008B	DATE	18-10-24
ORIGINAL SCALE	A3 N.T.S.	CONTRACT No.	—
REF No.			
DWG No.	2014139 .008		ISSUE B

1. ASSUMED BEARING OF 100kPa.
2. ALL CONCRETE 25MPa.
3. BASE PLATE AND ANTENNA TO BE STAINLESS STEEL 316.
4. FIXING DETAILS TO BE READ IN CONJUNCTION WITH WSL DRAWING 2014139.005
5. ALL WELDS TO BE 6mm STAINLESS STEEL 316L FILLET WELDS.
6. ALL DIMENSIONS ARE IN mm UNLESS OTHERWISE NOTED.

\* WSL DRAWINGS 2014139.001 - 013 ARE TO BE READ IN CONJUNCTION. CONTRACTOR TO CONFIRM WIND SPEED, SITE CONDITIONS, AND SUBSTRATE MATERIALS (GROUND AND WALL/CABINET) ARE ADEQUATE FOR THE ANTENNA DETAILS PROVIDED. ALL ANTENNA INSTALLATIONS MUST COMPLY WITH THE NOTES AND REQUIREMENTS OUTLINED ON THE RELEVANT DRAWINGS. CONTRACTOR TO NOTIFY NECESSARY PARTIES IF SITE DOES NOT COMPLY WITH THE REQUIREMENTS OR IF SITE CONDITIONS REQUIRE A SPECIFIC ENGINEERING DESIGN OUTSIDE THE SCOPE OF WHAT IS PROVIDED.



TYPE 5 PAD DETAIL

NTS

03

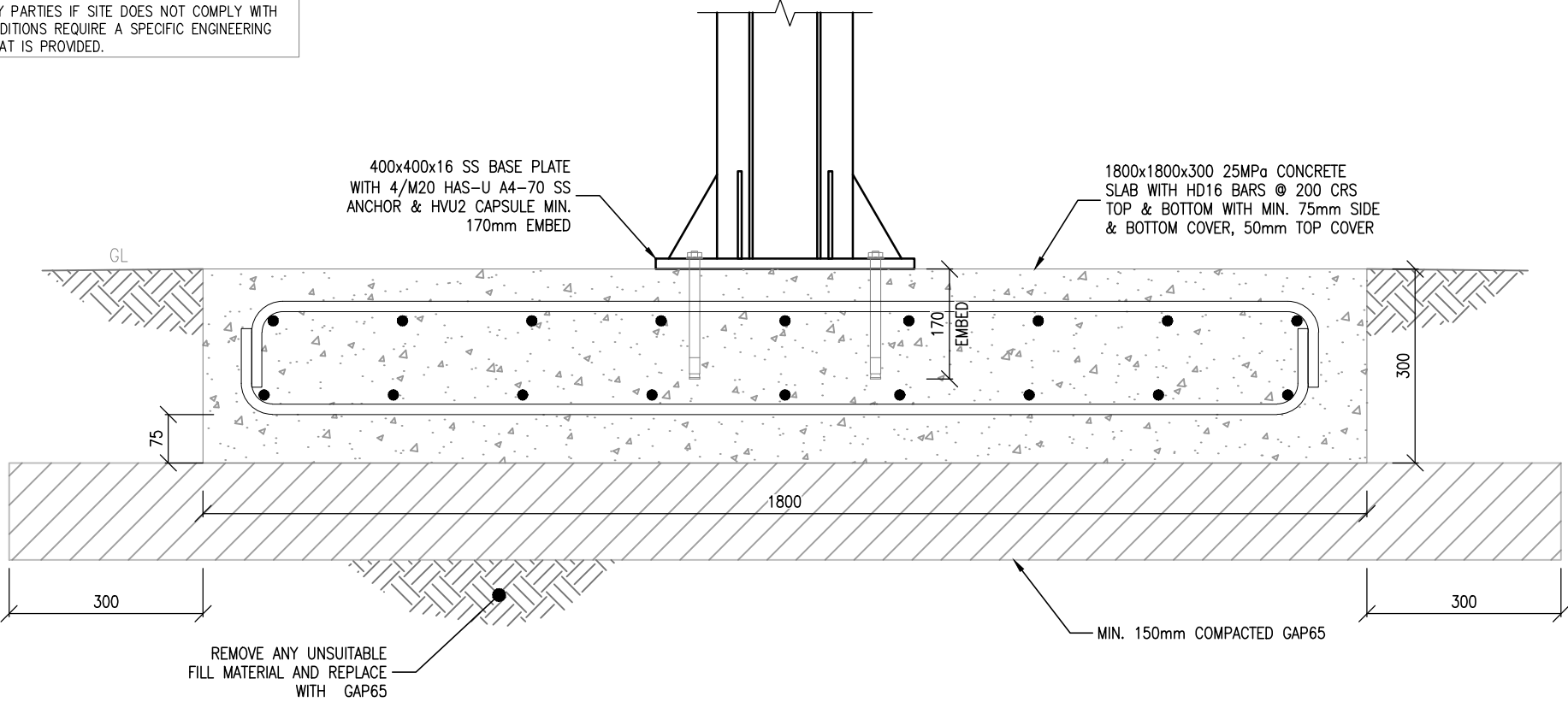
-

CONSTRUCTION ISSUE \*

				DESIGNED	E. Pocklington	05-24	 <b>Watercare</b>	WATERCARE SERVICES LIMITED STANDARD DRAWING  ANTENNA POLE FIXING DETAILS – TYPE 5 SLAB DETAIL	CAD FILE	2014139 .009B	DATE	18-10-24
				DES. APPROVED	A. Gill	05-24			ORIGINAL SCALE	A3	CONTRACT No.	—
				DRAWN	A. Vitoria	05-24				N.T.S.		
				DWG. APPROVED	A. Gill	05-24						
B	10-24	FOR CONSTRUCTION – REVISED	AV	AG	WSL DESIGN MGMT.		COPYRIGHT – This drawing, the design concept, remain the exclusive property of Watercare Services Limited and may not be used without approval. Copyright reserved.	REF No.				
A	09-24	FOR CONSTRUCTION – REVISED	AV	AG	WSL PROJ. LEAD			DWG No.	2014139 .009	ISSUE	B	
—	05-24	FOR CONSTRUCTION	AV	AG								
ISSUE	DATE	AMENDMENT	BY	APPD.		BY	DATE					

- NOTE:
- 1. ASSUMED BEARING OF 100kPa.
  - 2. ALL CONCRETE 25MPa.
  - 3. BASE PLATE AND ANTENNA TO BE STAINLESS STEEL 316.
  - 4. FIXING DETAILS TO BE READ IN CONJUNCTION WITH WSL DRAWING 2014139.005
  - 5. ALL DIMENSIONS ARE IN mm UNLESS OTHERWISE NOTED.

\* WSL DRAWINGS 2014139.001 – 013 ARE TO BE READ IN CONJUNCTION. CONTRACTOR TO CONFIRM WIND SPEED, SITE CONDITIONS, AND SUBSTRATE MATERIALS (GROUND AND WALL/CABINET) ARE ADEQUATE FOR THE ANTENNA DETAILS PROVIDED. ALL ANTENNA INSTALLATIONS MUST COMPLY WITH THE NOTES AND REQUIREMENTS OUTLINED ON THE RELEVANT DRAWINGS. CONTRACTOR TO NOTIFY NECESSARY PARTIES IF SITE DOES NOT COMPLY WITH THE REQUIREMENTS OR IF SITE CONDITIONS REQUIRE A SPECIFIC ENGINEERING DESIGN OUTSIDE THE SCOPE OF WHAT IS PROVIDED.



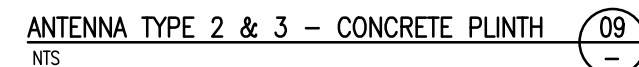
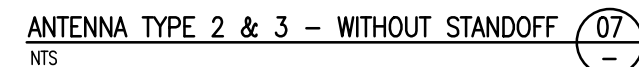
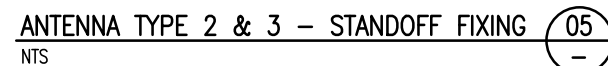
SECTION 04  
NTS S02

CONSTRUCTION ISSUE \*


				DESIGNED	E. Peckington	05-24	 <b>Watercare</b> COPYRIGHT - This drawing, the design concept, remain the exclusive property of Watercare Services Limited and may not be used without approval. Copyright reserved.	<b>WATERCARE SERVICES LIMITED</b> <b>STANDARD DRAWING</b> ANTENNA POLE FIXING DETAILS – TYPE 5 SLAB SECTION	CAD FILE	2014139 .010A	DATE	18-10-24
				DES. APPROVED	A. Gill	05-24			ORIGINAL SCALE	A3	CONTRACT No.	-
				DRAWN	A. Vitoria	05-24			REF No.			
				DWG. APPROVED	A. Gill	05-24			DWG No.	2014139 .010	ISSUE	A
B	10-24	FOR CONSTRUCTION – REVISED	AV	AG	WSL DESIGN MGMT.							
A	09-24	FOR CONSTRUCTION – REVISED	AV	AG	WSL PROJ. LEAD							
-	05-24	FOR CONSTRUCTION	AV	AG								
ISSUE	DATE	AMENDMENT	BY	APPD.		BY	DATE					

1. IF FIXED TO A CABINET ENSURE CABINET HAS ADEQUATE STRENGTH AND USE A DOUBLER PLATE.
2. BASE PLATE AND ANTENNA TO BE STAINLESS STEEL 316.
3. FIXING DETAILS TO BE READ IN CONJUNCTION WITH WSL DRAWINGS 2014139.002, 2014139.003, 2014139.006 AND 2014139.007.
4. ALL WELDS TO BE 6mm STAINLESS STEEL 316L FILLET WELDS.
5. ALL DIMENSIONS ARE IN mm UNLESS OTHERWISE NOTED.

\* WSL DRAWINGS 2014139.001 - 013 ARE TO BE READ IN CONJUNCTION. CONTRACTOR TO CONFIRM WIND SPEED, SITE CONDITIONS, AND SUBSTRATE MATERIALS (GROUND AND WALL/CABINET) ARE ADEQUATE FOR THE ANTENNA DETAILS PROVIDED. ALL ANTENNA INSTALLATIONS MUST COMPLY WITH THE NOTES AND REQUIREMENTS OUTLINED ON THE RELEVANT DRAWINGS. CONTRACTOR TO NOTIFY NECESSARY PARTIES IF SITE DOES NOT COMPLY WITH THE REQUIREMENTS OR IF SITE CONDITIONS REQUIRE A SPECIFIC ENGINEERING DESIGN OUTSIDE THE SCOPE OF WHAT IS PROVIDED.



CONSTRUCTION ISSUE \*

					DESIGNED	E. Pocklington	05-24	 <b>Watercare</b> COPYRIGHT - This drawing, the design concept, remain the exclusive property of Watercare Services Limited and may not be used without approval. Copyright reserved.
					DES. APPROVED	A. Gill	05-24	
					DRAWN	A. Vitoria	05-24	
B	10-24	FOR CONSTRUCTION - REVISED	AV	AG	DWG. APPROVED	A. Gill	05-24	
A	09-24	FOR CONSTRUCTION - REVISED	AV	AG	WSL DESIGN MGMT.			
-	05-24	FOR CONSTRUCTION	AV	AG	WSL PROJ. LEAD			
ISSUE	DATE	AMENDMENT	BY	APPD.		BY	DATE	

WATERCARE SERVICES LIMITED  
STANDARD DRAWING

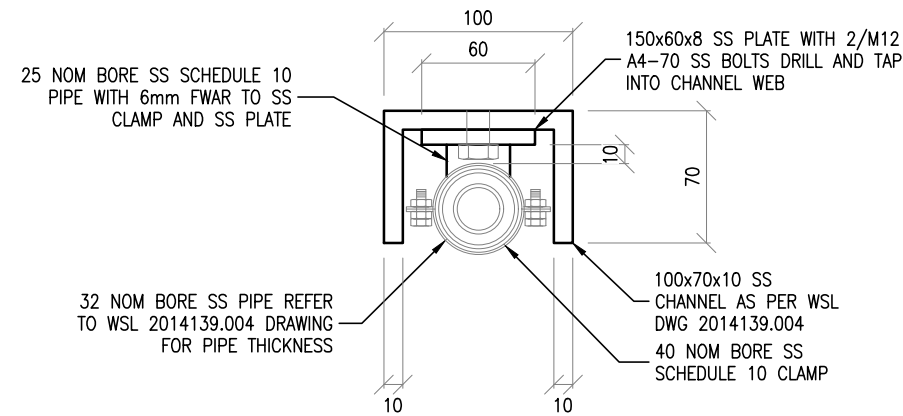
### ANTENNA POLE FIXING DETAILS – TYPE 2 & 3 DETAIL

CAD FILE	2014139 .011B	DATE	18-10-24
ORIGINAL	SCALE A3 N.T.S.	CONTRACT No.	—
REF No.			
DWG No.	2014139 .011		ISSUE B

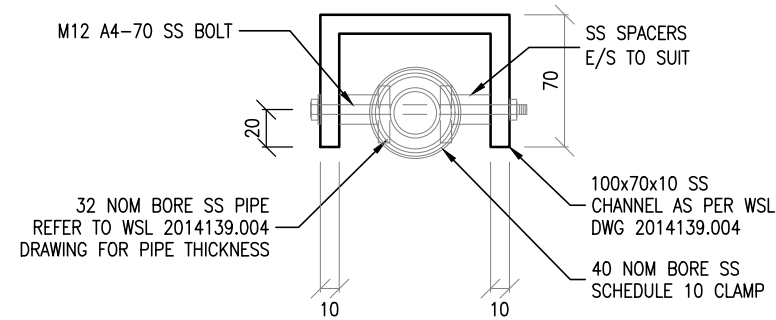


- NOTE:
1. IF FIXED TO A CABINET ENSURE CABINET HAS ADEQUATE STRENGTH AND USE A DOUBLER PLATE.
  2. CHANNEL AND ANTENNA TO BE STAINLESS STEEL 316.
  3. TYPE 4 FIXING DETAILS TO BE READ IN CONJUNCTION WITH WSL DRAWING 2014139.004
  4. ALL WELDS TO BE 6mm STAINLESS STEEL 316L FILLET WELDS.
  5. ALL DIMENSIONS ARE IN mm UNLESS OTHERWISE NOTED.

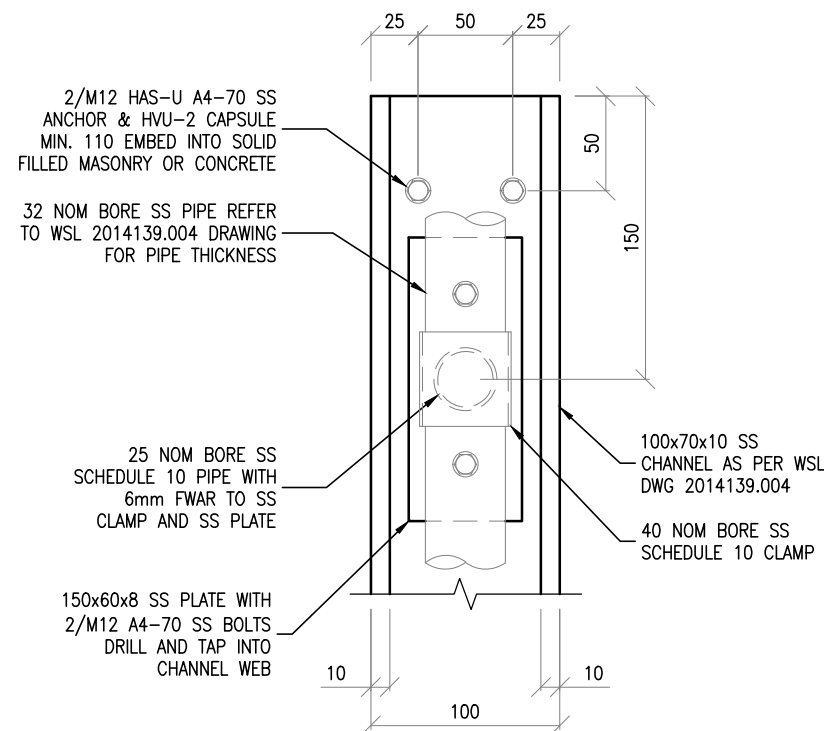
\* WSL DRAWINGS 2014139.001 – 013 ARE TO BE READ IN CONJUNCTION. CONTRACTOR TO CONFIRM WIND SPEED, SITE CONDITIONS, AND SUBSTRATE MATERIALS (GROUND AND WALL/CABINET) ARE ADEQUATE FOR THE ANTENNA DETAILS PROVIDED. ALL ANTENNA INSTALLATIONS MUST COMPLY WITH THE NOTES AND REQUIREMENTS OUTLINED ON THE RELEVANT DRAWINGS. CONTRACTOR TO NOTIFY NECESSARY PARTIES IF SITE DOES NOT COMPLY WITH THE REQUIREMENTS OR IF SITE CONDITIONS REQUIRE A SPECIFIC ENGINEERING DESIGN OUTSIDE THE SCOPE OF WHAT IS PROVIDED.



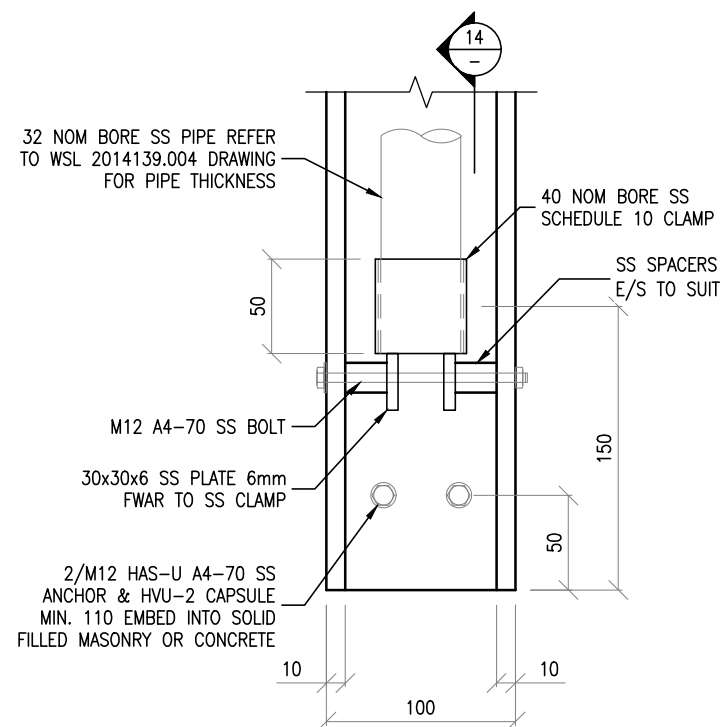
ANTENNA TYPE 4 TOP FIXING DETAIL (10) NTS



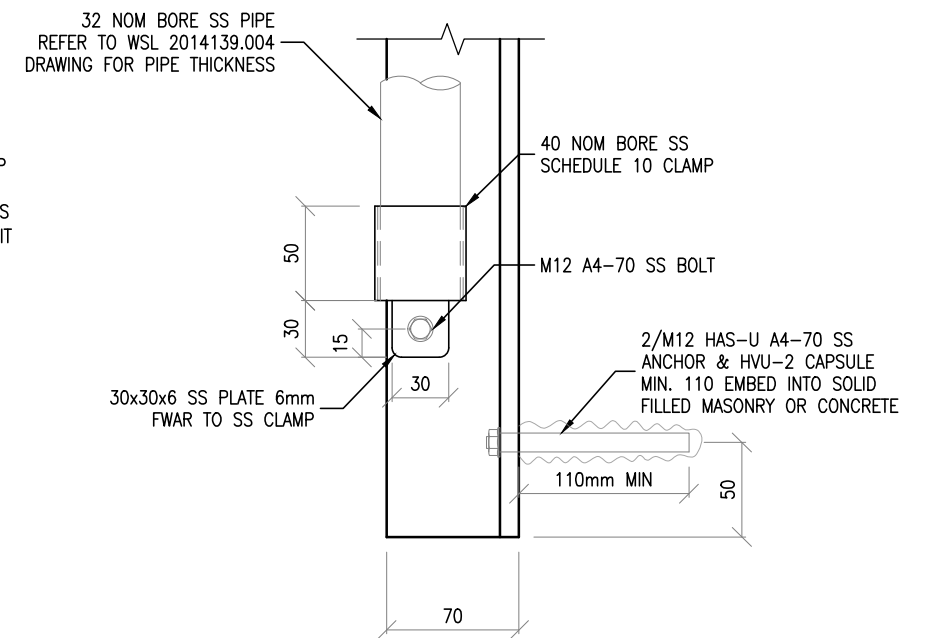
ANTENNA TYPE 4 BASE FIXING DETAIL (12) NTS



SECTION 11 NTS



SECTION 13 NTS



SECTION 14 NTS

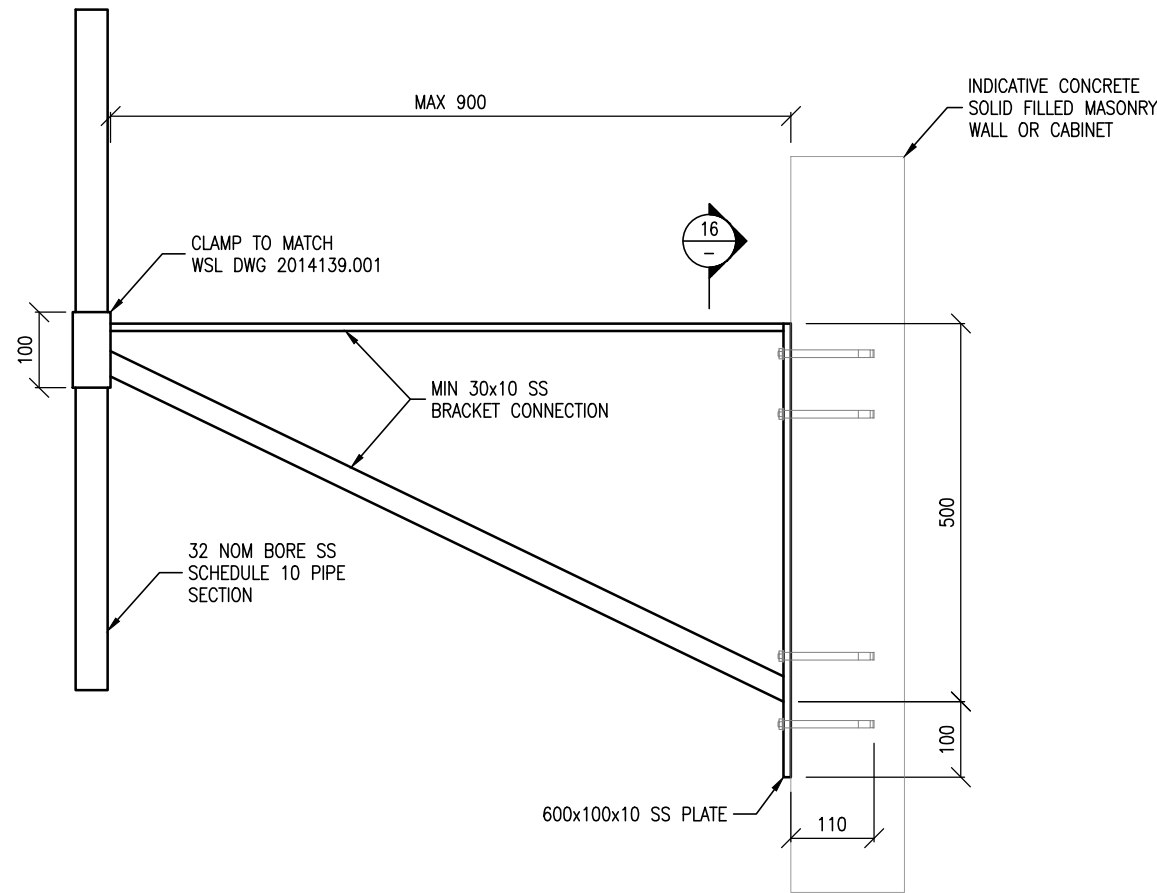
CONSTRUCTION ISSUE \*

				DESIGNED	E. Pocklington	05-24
				DES. APPROVED	A. Gill	05-24
				DRAWN	A. Vitoria	05-24
B	10-24	FOR CONSTRUCTION – REVISED	AV	DWG. APPROVED	A. Gill	05-24
A	09-24	FOR CONSTRUCTION – REVISED	AV	WSL DESIGN MGMT.		
–	05-24	FOR CONSTRUCTION	AV	WSL PROJ. LEAD		
ISSUE	DATE	AMENDMENT	BY	APPD.	BY	DATE



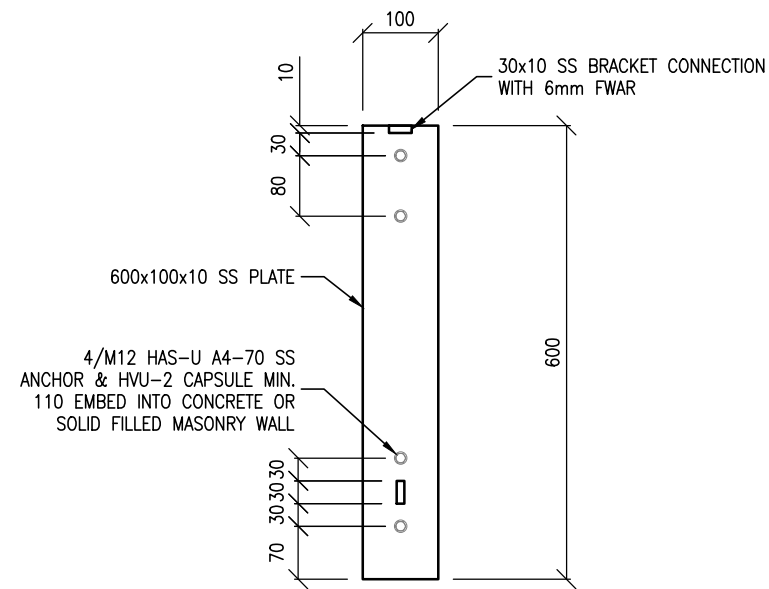
WATERCARE SERVICES LIMITED  
STANDARD DRAWING  
ANTENNA POLE FIXING DETAILS – TYPE 4 DETAIL

CAD FILE	2014139 .012B	DATE	18-10-24
ORIGINAL SCALE	A3 N.T.S.	CONTRACT No.	–
REF No.			
DWG No.	2014139 .012	ISSUE	B



ANTENNA TYPE 1 BRACKET  
NTS

15  
—



SECTION  
NTS

16  
—

- NOTE:
1. IF FIXED TO A CABINET ENSURE CABINET HAS ADEQUATE STRENGTH AND USE A DOUBLER PLATE.
  2. BASE PLATE AND ANTENNA TO BE STAINLESS STEEL 316.
  3. TYPE 1 FIXING DETAILS TO BE READ IN CONJUNCTION WITH WSL DRAWING 2014139.001
  4. ALL WELDS TO BE 6mm STAINLESS STEEL 316L FILLET WELDS.
  5. ALL DIMENSIONS ARE IN mm UNLESS OTHERWISE NOTED.

\* WSL DRAWINGS 2014139.001 – 013 ARE TO BE READ IN CONJUNCTION. CONTRACTOR TO CONFIRM WIND SPEED, SITE CONDITIONS, AND SUBSTRATE MATERIALS (GROUND AND WALL/CABINET) ARE ADEQUATE FOR THE ANTENNA DETAILS PROVIDED. ALL ANTENNA INSTALLATIONS MUST COMPLY WITH THE NOTES AND REQUIREMENTS OUTLINED ON THE RELEVANT DRAWINGS. CONTRACTOR TO NOTIFY NECESSARY PARTIES IF SITE DOES NOT COMPLY WITH THE REQUIREMENTS OR IF SITE CONDITIONS REQUIRE A SPECIFIC ENGINEERING DESIGN OUTSIDE THE SCOPE OF WHAT IS PROVIDED.

CONSTRUCTION ISSUE \*

				DESIGNED	E. Pecklington	05-24	 COPYRIGHT – This drawing, the design concept, remain the exclusive property of Watercare Services Limited and may not be used without approval. Copyright reserved.	WATERCARE SERVICES LIMITED STANDARD DRAWING ANTENNA POLE FIXING DETAILS – TYPE 1 DETAIL	CAD FILE	2014139 .013B	DATE	18-10-24
				DES. APPROVED	A. Gill	05-24			ORIGINAL SCALE	A3	CONTRACT No.	—
				DRAWN	A. Vitoria	05-24			N.T.S.			
B	10-24	FOR CONSTRUCTION – REVISED	AV	AG	DWG. APPROVED	A. Gill			REF No.			
A	09-24	FOR CONSTRUCTION – REVISED	AV	AG	WSL DESIGN MGMT.				DWG No.	2014139 .013	ISSUE	B
—	05-24	FOR CONSTRUCTION	AV	AG	WSL PROJ. LEAD							
ISSUE	DATE	AMENDMENT	BY	APPD.		BY	DATE					